

PENNSYLVANIA GAME COMMISSION

PROJECT NO. PGC-048-21-02

STATE GAME LANDS #048

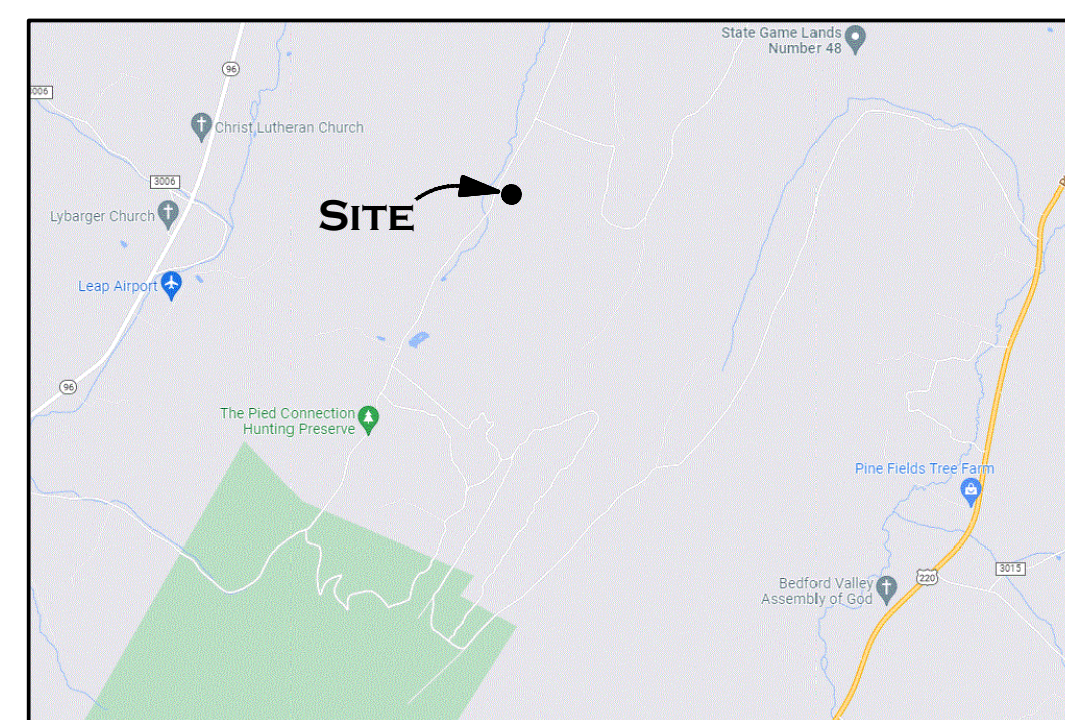
NEW 40' x 80' CREW HEADQUARTERS BUILDING

HARRISON TOWNSHIP, BEDFORD COUNTY, PENNSYLVANIA

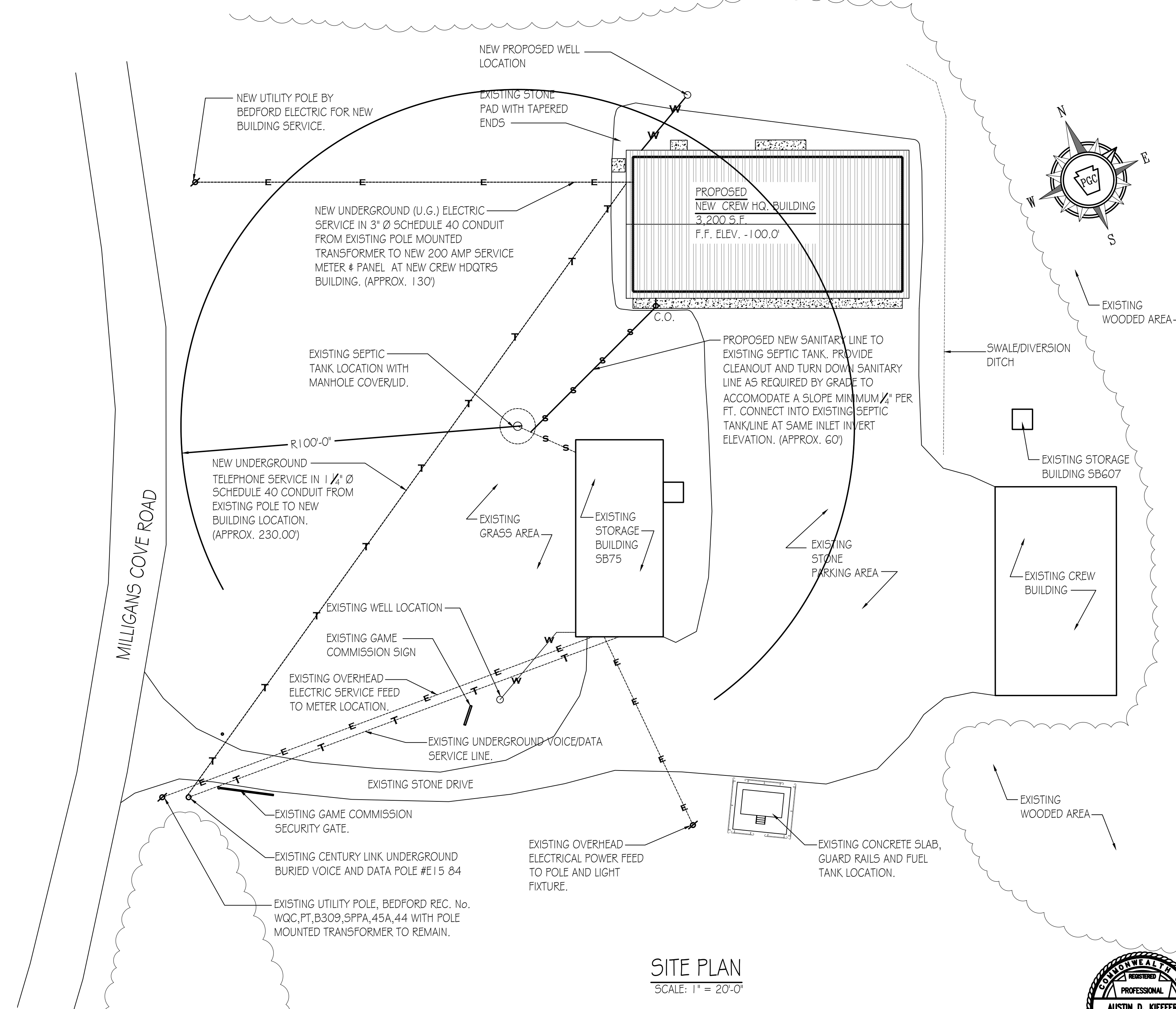
CONTRACT NO. 1: GENERAL CONSTRUCTION CONTRACT NO. 3: PLUMBING CONSTRUCTION
CONTRACT NO. 2: MECHANICAL CONSTRUCTION CONTRACT NO. 4: ELECTRICAL CONSTRUCTION

SITE PLAN GENERAL NOTES:

1. UTILITY LINE LOCATIONS SHOWN ON THE DRAWINGS ARE APPROXIMATE. UNDERGROUND TELEPHONE, ELECTRIC, GAS, SANITARY SEWER, WATER AND STORMWATER DRAINAGE LINES MAY BE PRESENT AT SOME WORK LOCATIONS. FIELD VERIFICATION IS REQUIRED PRIOR TO ANY CONSTRUCTION. CONTACT PA ONE CALL AND COMPLY WITH ACT 287 (AS AMENDED) REGARDING LOCATIONS OF UNDERGROUND UTILITIES.
2. ALL WORK WITHIN THE PUBLIC RIGHT-OF-WAY SHALL BE CONDUCTED IN ACCORDANCE WITH THE REQUIREMENTS OF PENNDOT, THE LOCAL MUNICIPALITY AND THE CONTRACT DOCUMENTS.
3. CONTRACTOR SHALL COORDINATE WITH AFFECTED UTILITY COMPANIES IN THE EVENT ITEMS SUCH AS TEMPORARY POLE SUPPORT IS REQUIRED. THIS WORK SHALL BE COMPLETED AT NO ADDITIONAL COST TO THE OWNER.
4. EXISTING DRAINAGE FACILITIES SHALL REMAIN INTACT DURING CONSTRUCTION, UNLESS OTHERWISE DIRECTED BY THE ENGINEER.
5. ALL AREAS DISTURBED BY THE CONSTRUCTION WORK SHALL BE RESTORED IN ACCORDANCE WITH THE CONTRACT DOCUMENTS TO THEIR ORIGINAL CONDITION OR BETTER.
6. ALL DISTURBED AREAS NOT RECEIVING OTHER SURFACE TREATMENT SHALL BE GRADED, SEEDED, AND MULCHED.
7. CONTRACTOR SHALL REFER TO CONTRACT DOCUMENTS FOR SOIL EROSION & SEDIMENTATION CONTROL PLAN REQUIREMENTS.
8. MAINTAIN ACCESS TO DRIVEWAYS AND ENTRANCES LOCATED ALONG THE PROJECT.
9. THE CONTRACTOR SHALL ENSURE THAT ALL CONSTRUCTION VEHICLES (INCLUDING MATERIAL SUPPLIER VEHICLES) LEAVING THE PROJECT AREA HAVE MUD BUILDUP REMOVED FROM THE TIRES BEFORE EXITING ONTO PAVED ROADWAYS. ALL MUD TRACKED ONTO PAVED ROADWAYS SHALL BE IMMEDIATELY REMOVED FROM THE ROADWAY.



PROJECT VICINITY MAP
NOT TO SCALE



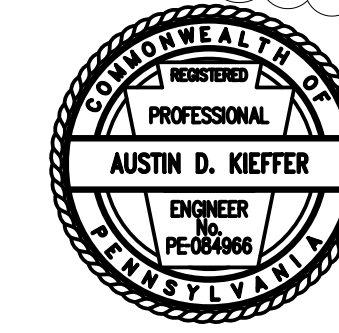
SITE PLAN
SCALE: 1" = 20'-0"

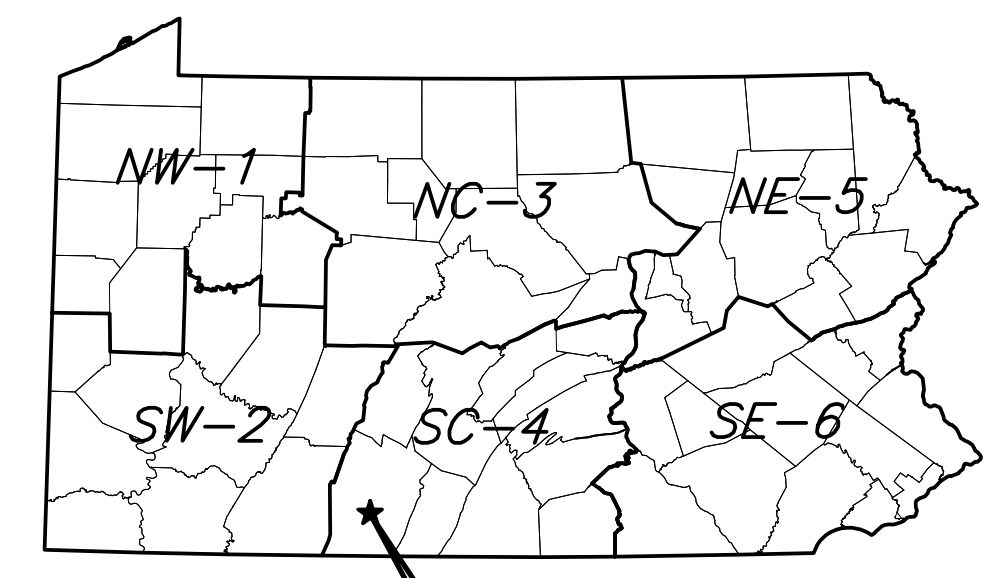
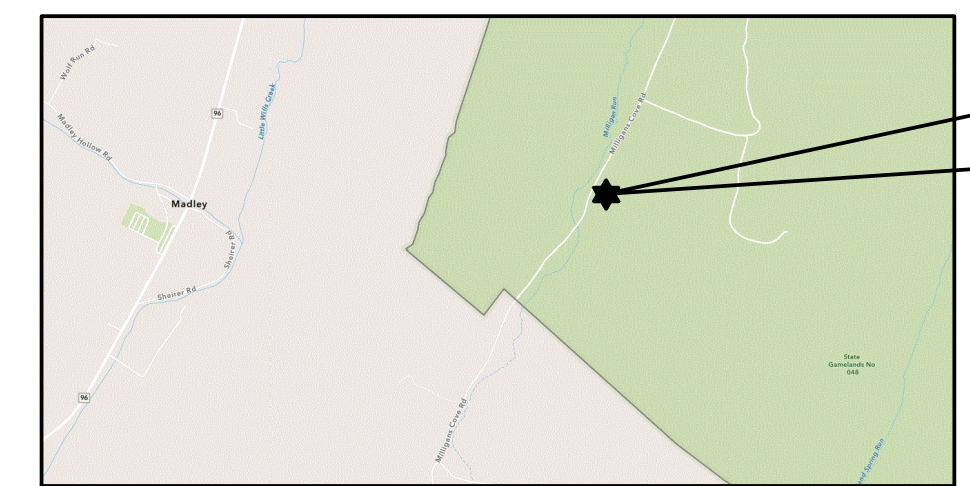
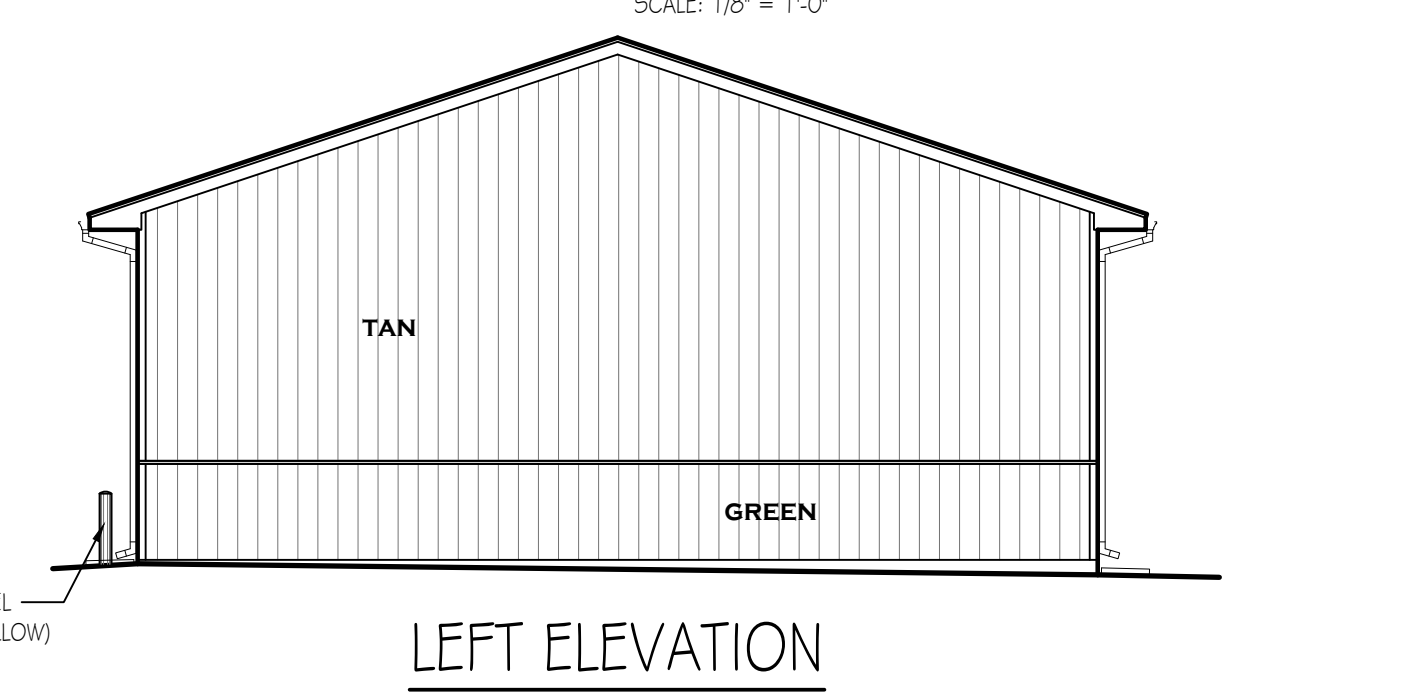
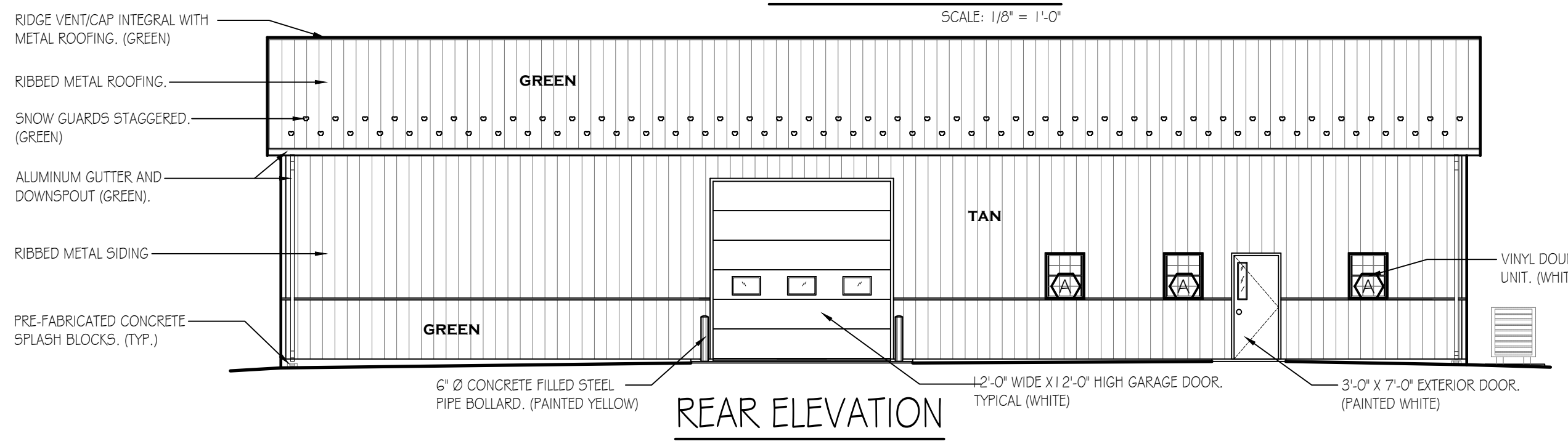
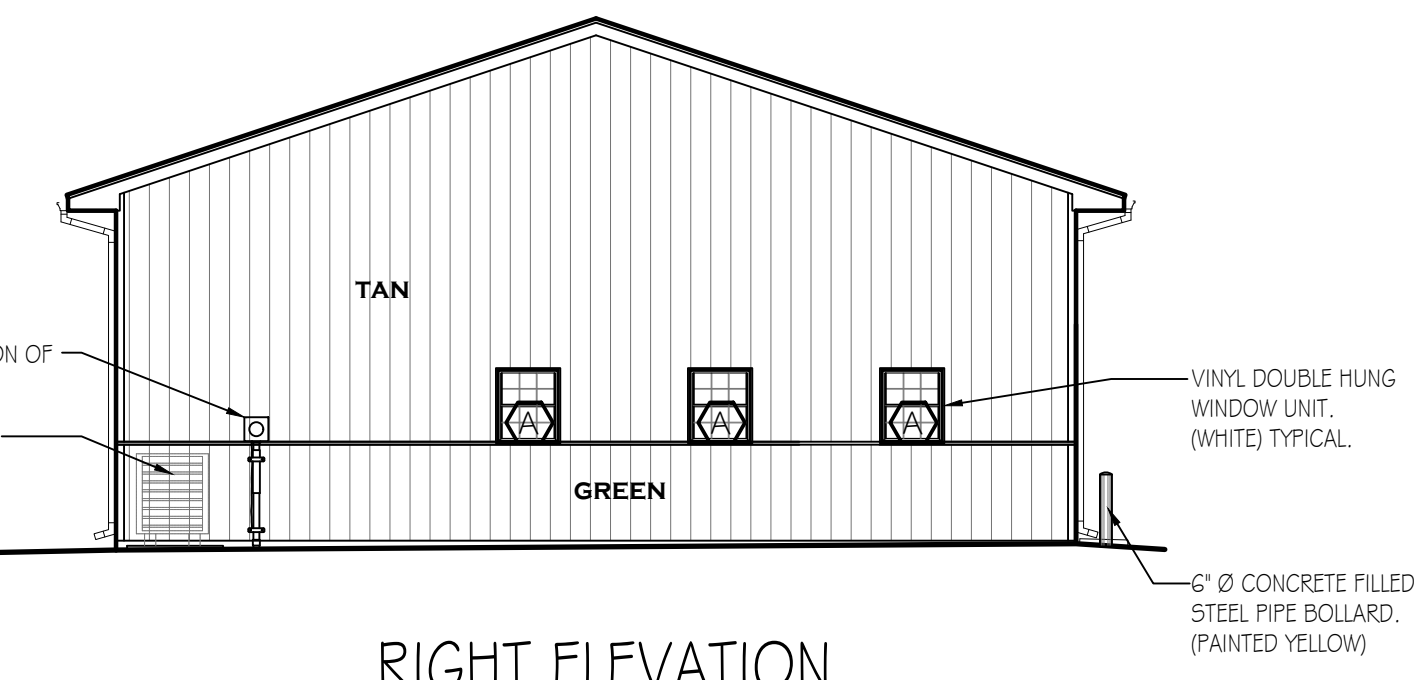
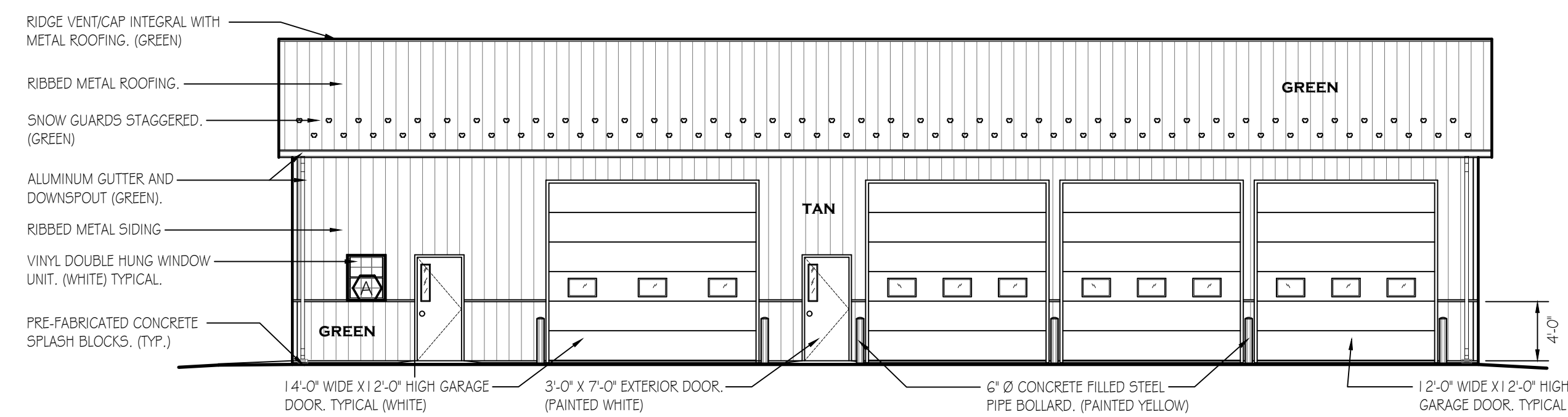
DRAWING INDEX

CS-1	COVER SHEET # BUILDING SITE PLAN
A-1	BUILDING FLOOR PLAN # ELEVATIONS
A-2	WALL SECTION # DETAILS
A-3	SECTIONS, DETAILS, SCHEDULES # REFLECTED CEILING PLAN
P-1	PLUMBING FLOOR PLAN, ELEVATIONS # DETAILS
M-1	MECHANICAL FLOOR PLAN # DETAILS
E-1	ELECTRICAL FLOOR PLAN, SCHEDULES # DETAILS

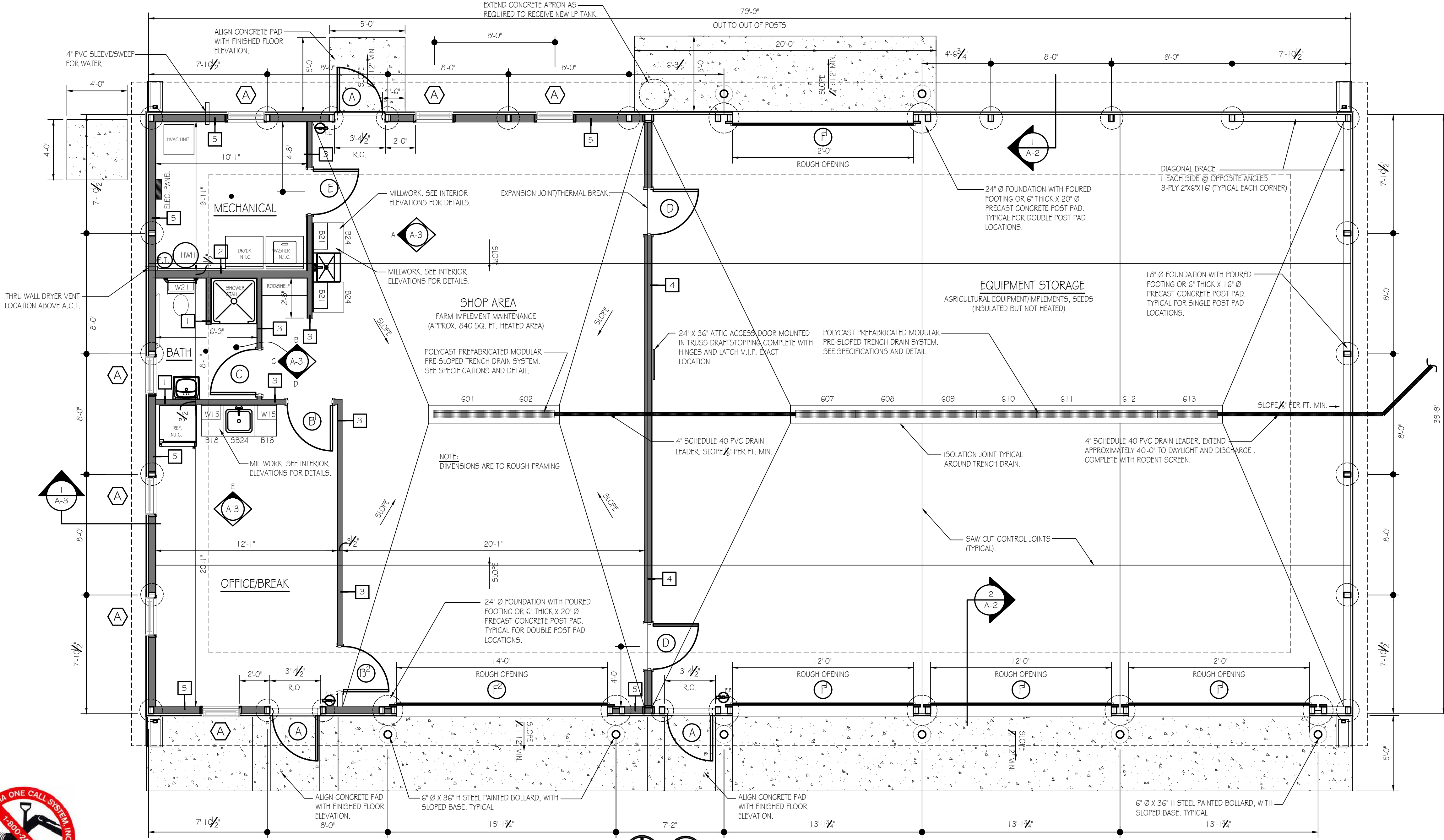
PENNSYLVANIA GAME COMMISSION

STATE GAME LANDS # 048		HARRISON TOWNSHIP		BEDFORD COUNTY	
NEW 40' x 80' CREW HEADQUARTERS BUILDING					
COVER SHEET # BUILDING SITE PLAN					
REVISIONS		PROJECT NO.	PGC-048-21-02		
		DRAWN BY:	M. SPOTTIS		
		DATE:	3/11/2023		
		SHEET NO.	CS-1		





PROJECT LOCATION MAP
NO SCALE



WALL LEGEND:

- 1 2"x4" WOOD STUDS @ 16" O.C. EXTEND TOP OF WALL TO 1'-0" A.F.F. PROVIDE O5B OR PLYWOOD SHEATHING WITH FRP (FIBERGLASS REINFORCED WALL PANELS) WALL FINISH EXTENDED TO 8'-0" A.F.F. TYPICAL FOR BOTH SIDES.
- 2 2"x6" WOOD STUDS @ 16" O.C. EXTEND TOP OF WALL TO 1'-0" A.F.F. PROVIDE O5B OR PLYWOOD SHEATHING WITH FRP (FIBERGLASS REINFORCED WALL PANELS) WALL FINISH EXTENDED TO 8'-0" A.F.F. TYPICAL FOR BOTH SIDES.
- 3 2"x4" WOOD STUDS @ 16" O.C. EXTEND TO UNDERSIDE OF ROOF TRUSSES (APPROX ±13'-9"). PROVIDE O5B OR PLYWOOD SHEATHING WITH FRP (FIBERGLASS REINFORCED WALL PANELS) WALL FINISH EXTENDED TO 8'-0" A.F.F. AND METAL SIDING ABOVE EXTENDED TO METAL CEILING (SHOP AREA SIDE).
- 4 2"x6" WOOD STUDS @ 16" O.C. WITH R-20 BATT INSULATION (FULL HGT.) EXTEND TO UNDERSIDE OF ROOF TRUSSES (APPROX ±13'-9"). PROVIDE O5B OR PLYWOOD SHEATHING WITH FRP (FIBERGLASS REINFORCED WALL PANELS) WALL FINISH EXTENDED TO 8'-0" A.F.F. AND METAL SIDING ABOVE EXTENDED TO METAL CEILING (SHOP AREA SIDE). PROVIDE O5B OR PLYWOOD SHEATHING FULL HEIGHT WITH FRP FINISH EXTENDED TO 8'-0" A.F.F. AND METAL SIDING ABOVE EXTENDED TO UNDERSIDE OF TRUSSES. (EQUIPMENT STORAGE SIDE).
- 5 2"x6" WOOD INFILL STUDS BETWEEN LAMINATED SUPPORT COLUMNS/POSTS @ 16" O.C. FULL HEIGHT TO UNDERSIDE OF TRUSSES OR HEADER/TRUSS SEAT. WITH R-20 BATT INSULATION (FULL HGT.) PROVIDE O5B OR PLYWOOD SHEATHING FULL HEIGHT WITH FRP (FIBERGLASS REINFORCED WALL PANELS) WALL FINISH EXTENDED TO 8'-0" A.F.F. TYPICAL FOR OFFICE/BREAK, BATH & MECHANICAL ROOM SIDES. PROVIDE O5B OR PLYWOOD SHEATHING FULL HEIGHT WITH FRP FINISH EXTENDED TO 8'-0" A.F.F. AND METAL SIDING ABOVE EXTENDED TO METAL CEILING (SHOP AREA SIDE).

BUILDING CODE SUMMARY

Code: International Building Code, 2018 edition

Scope: Construction of a new 40' x 80' Crew Headquarters Building on State Game Lands No. 048 in Hamson Township, Bedford County. The new building shall include accommodations for PGC maintenance staff and storage of excavation equipment, implements and tools necessary for maintaining state game land grounds and roadways.

Summary:
Use & Occupancy Group: 304.1 B Building occupied portion for Office
3.1.1.1 S-1, Building portion used for Storage that are not S-2. (Table 601)

Construction Type: VB (Table 601)

New Building Area: 3,200s.f.

Allowable Area: 9,000 s.f. (Table 506.2)

Building Stones: 1 Story, No basement, Allowable Stones: 1 Table 504.4

Wind Load: Risk Category II Wind Speed 115 (FIGURE 1609.3(1) (Truss Design))

Fire Protection: No fire suppression, not required.

Fire Extinguishers: Units of "A" = 3,200 / 1,500 = 2.13 ~ 3 (Table 906.3(1)) Fire extinguisher shall be provided at each of the two building exits and one at the opposite end of building near OH door.

Occupant Load: Business, Occupancy Factor = 150 gross
445 S.F./150 = 2.96 ~ 3 persons
Storage, Occupancy Factor = 300 gross
2,755 S.F./300 = 9.2 ~ 10 persons

Egress Width: 108 x 0.2 inches = 21.6 inches min. (1005.3.2).

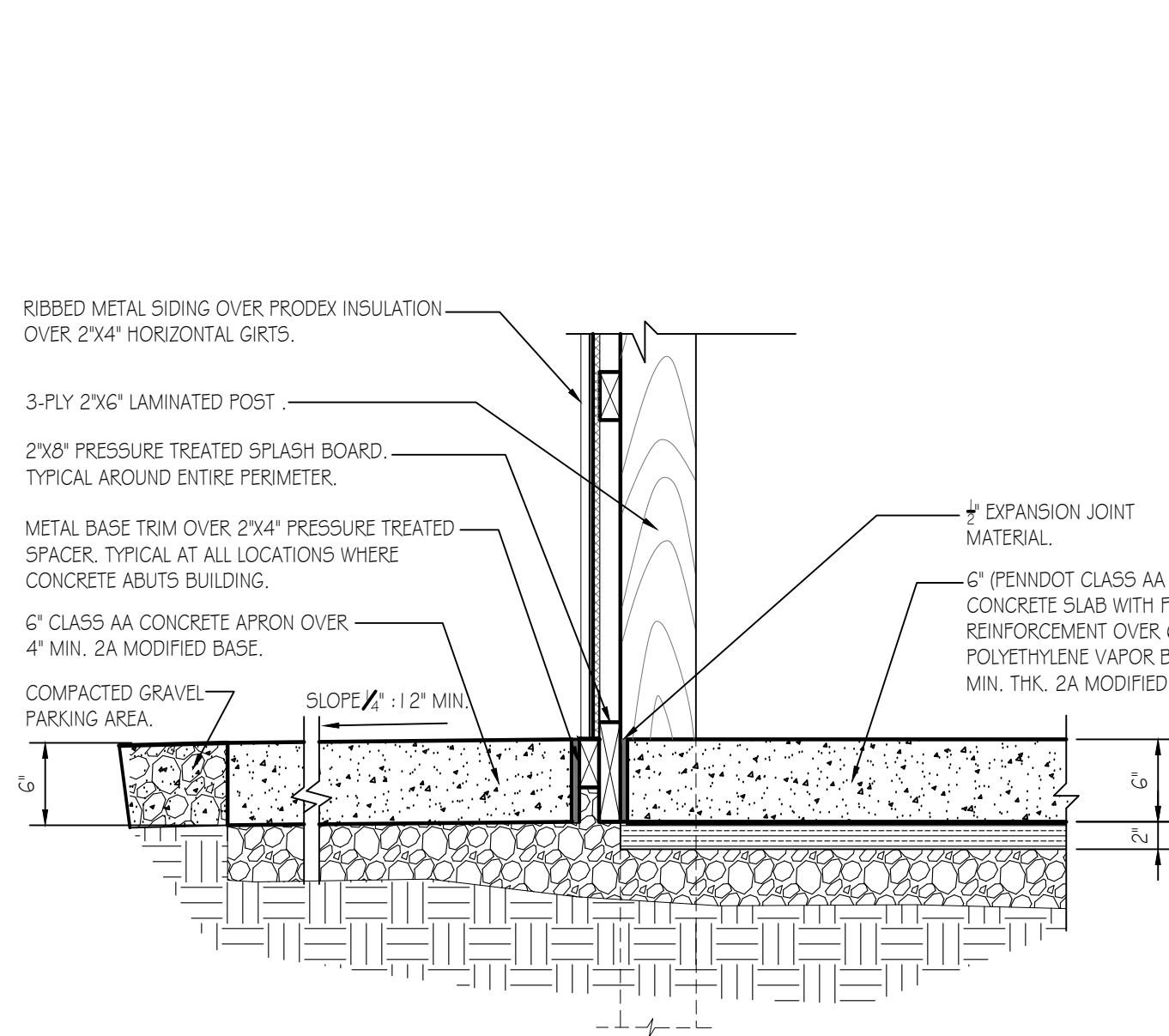
Means Of Egress: 3 Exits provided = 108 inches; 1 required (Table 1006.3.3(2))

Accessibility: Not required, agricultural building.
Requesting exemption/variance from PA L&I, A.A.B.
Building/structure to be partially heated and air conditioned.

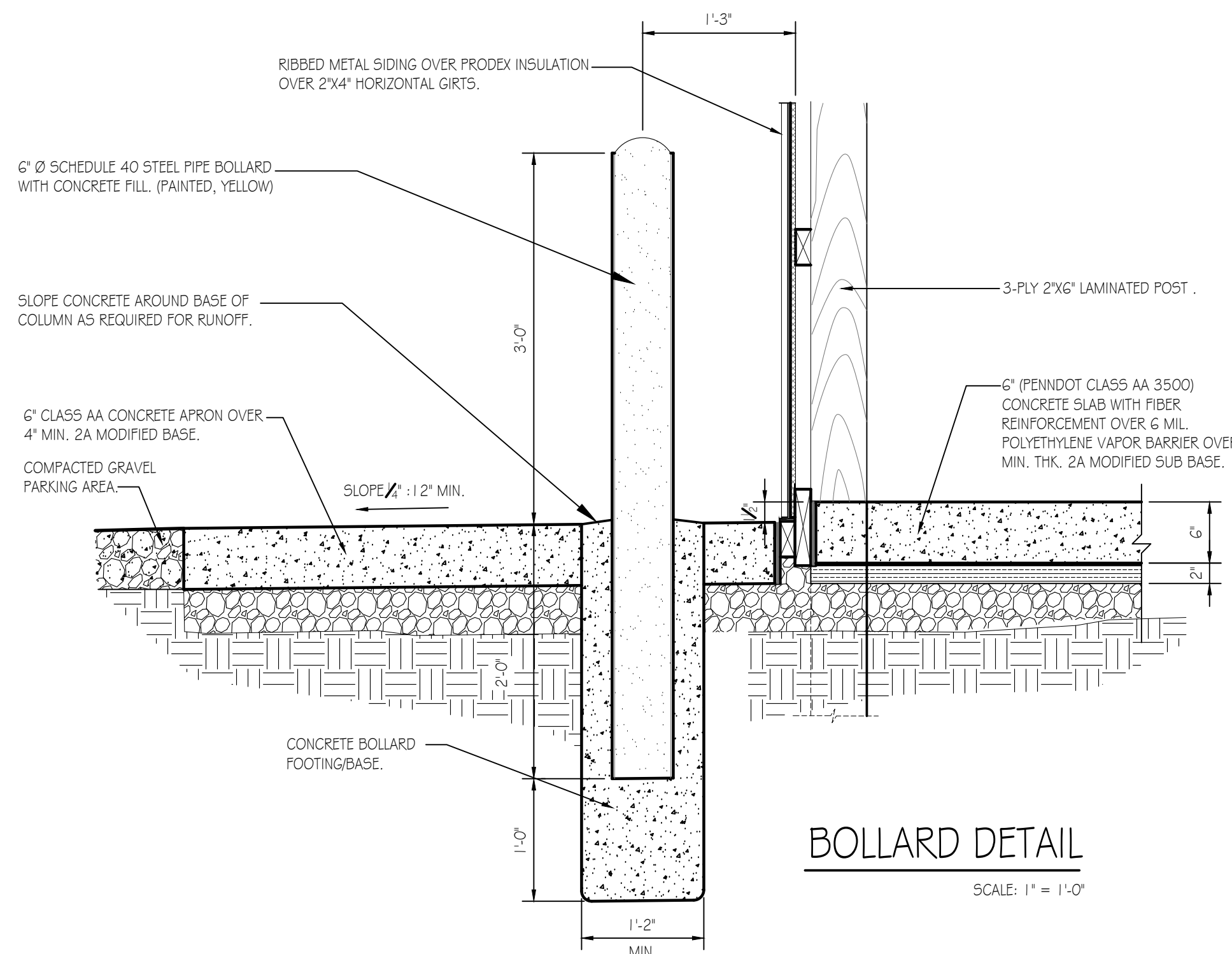
Energy Efficiency: Heated area: Crew Area + Shop Area = 1,280 S.F.



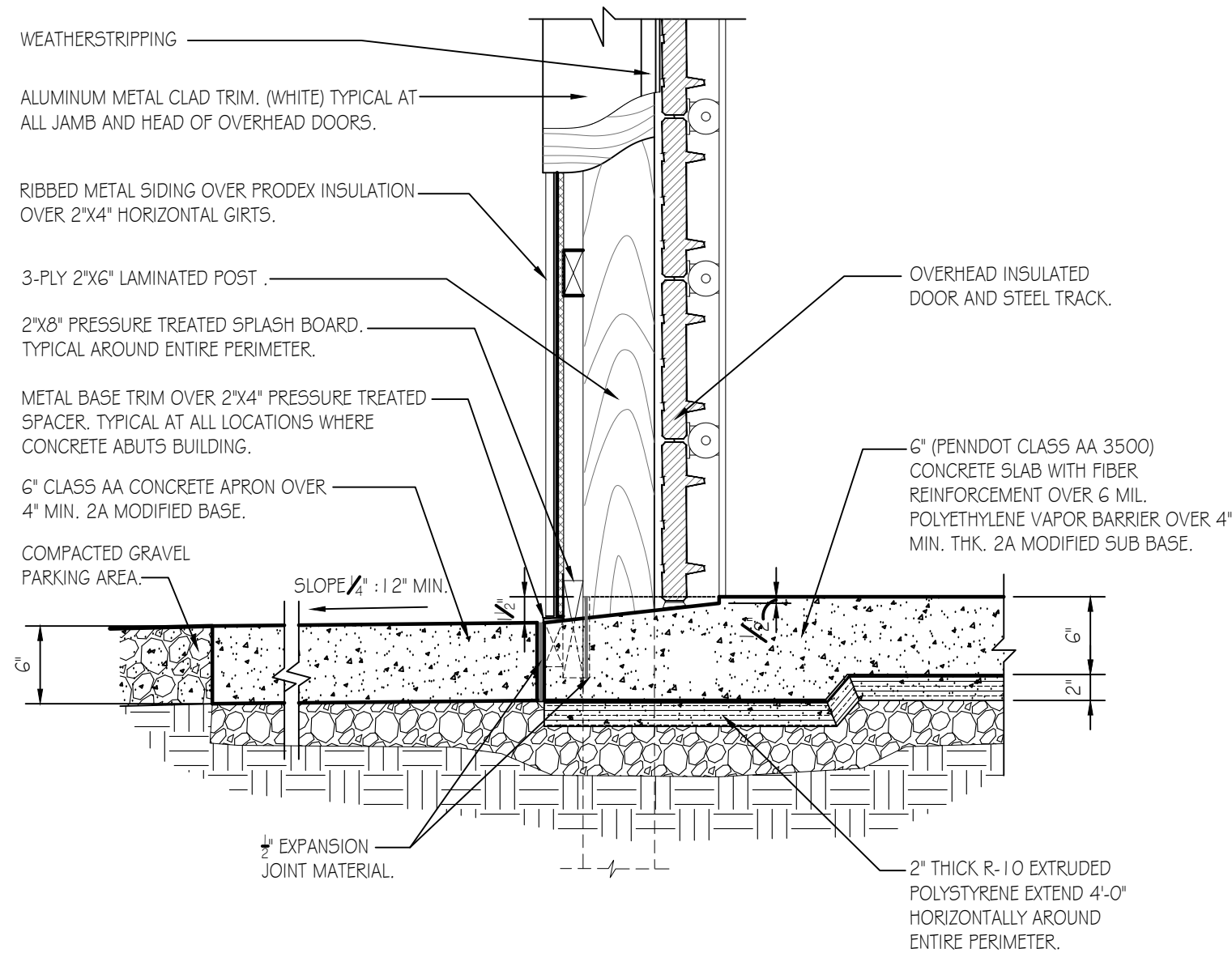
PENNSYLVANIA GAME COMMISSION		
STATE GAME LANDS # 048	HARRISON TOWNSHIP	BEDFORD COUNTY
NEW 40' x 80' CREW HEADQUARTERS BUILDING		
BUILDING FLOOR PLAN & ELEVATIONS		
REVISIONS	PROJECT NO.	PGC-048-21-02
	DRAWN BY:	M. SPOTTS
	DATE:	3/11/2023
	SHEET NO.	A-1



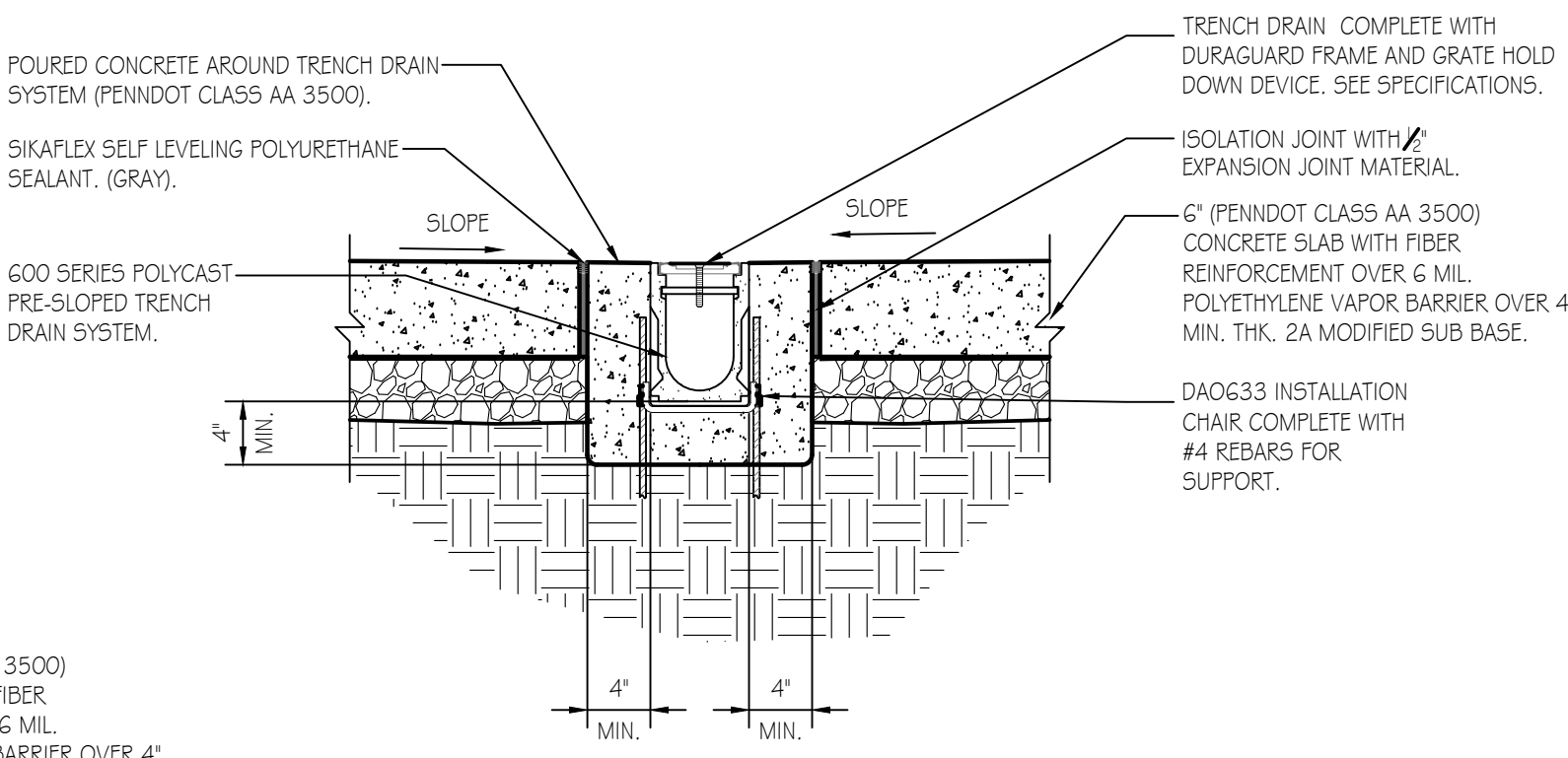
DETAIL @ CONCRETE SIDEWALK
SCALE: 1" = 1'-0"



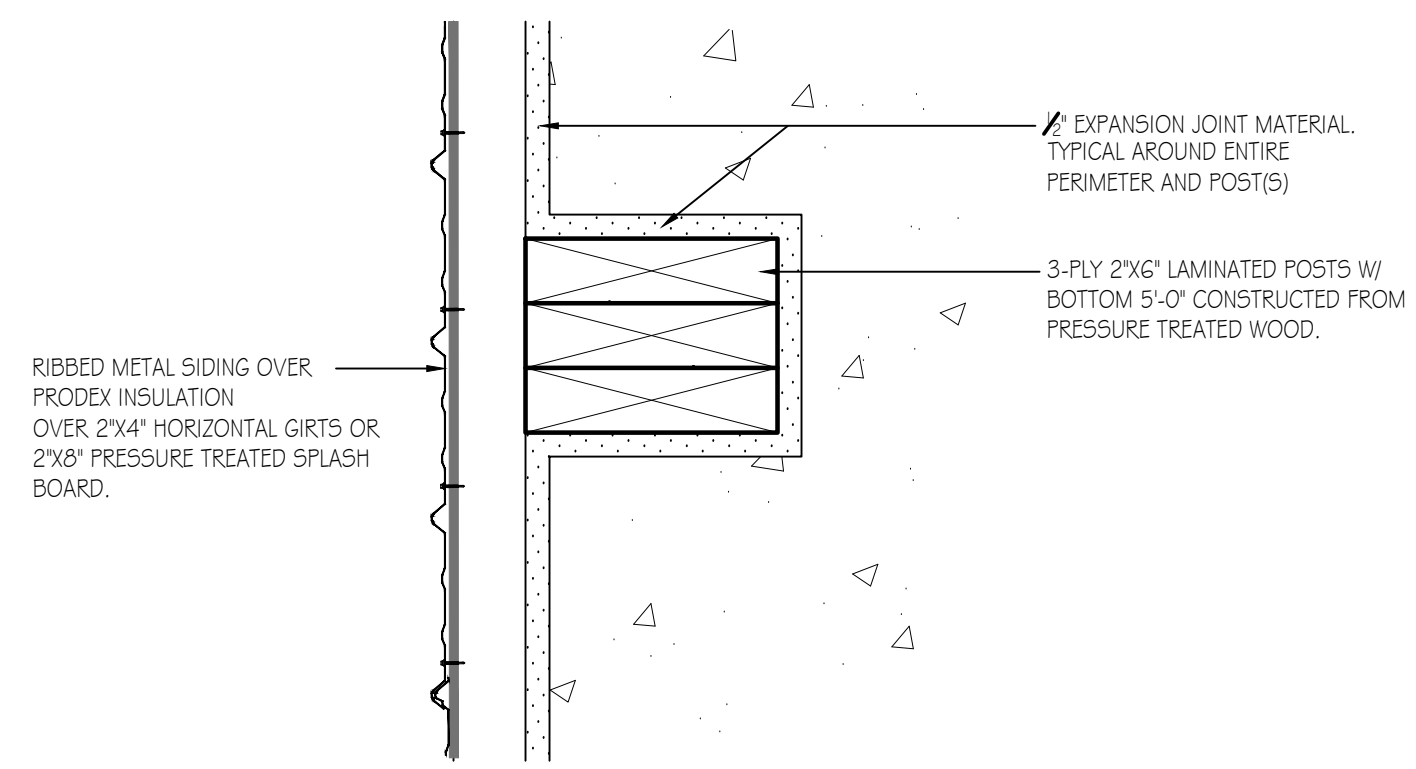
BOLLARD DETAIL
SCALE: 1" = 1'-0"



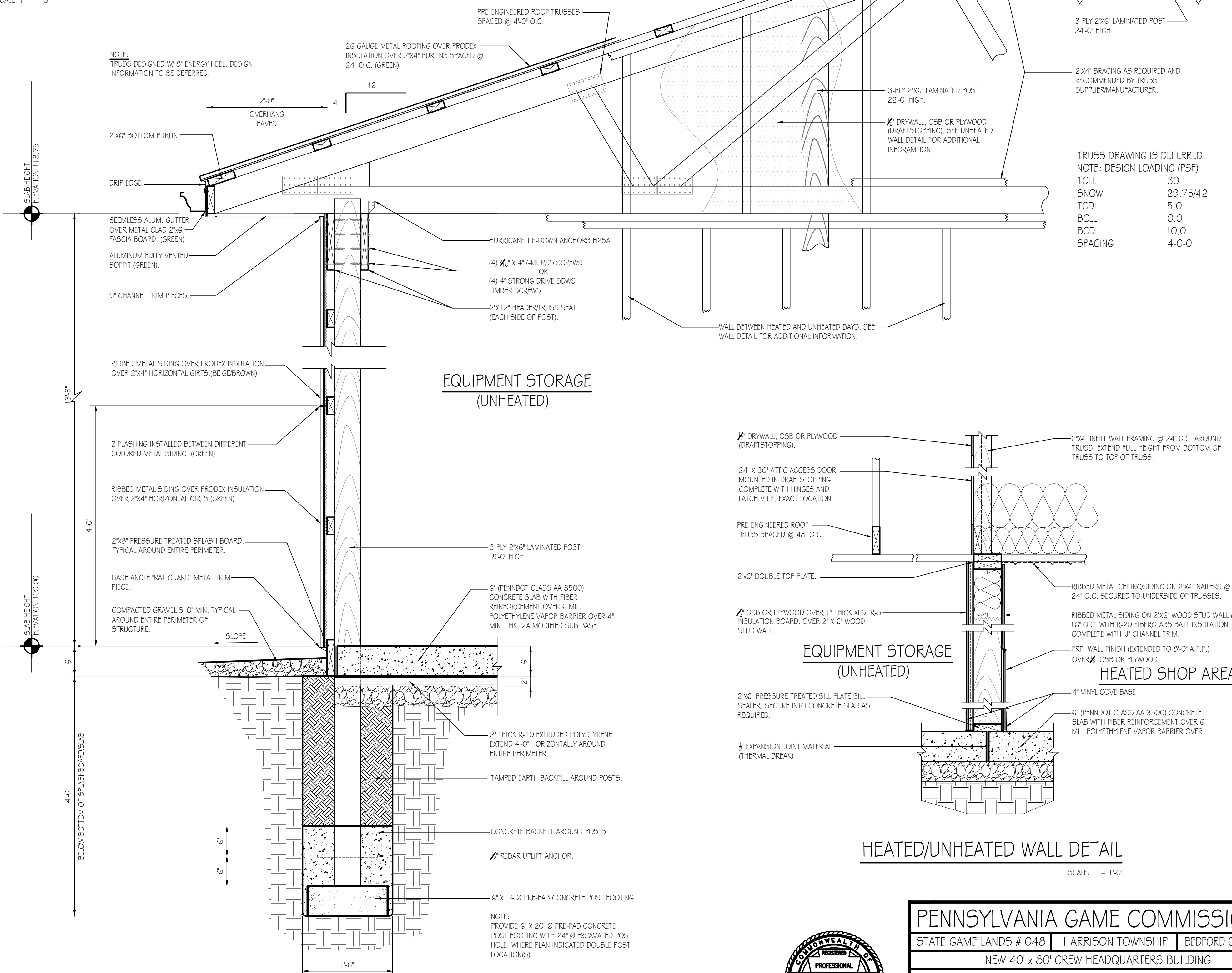
O.H. DOOR SILL AND JAMB DETAIL
SCALE: 1" = 1'-0"



TRENCH DRAIN DETAIL
SCALE: 1" = 1'-0"



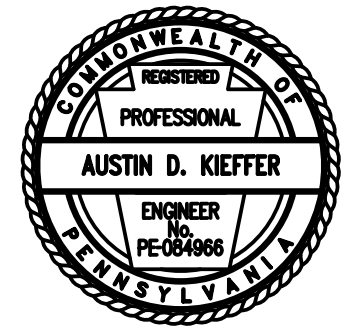
DETAIL AT POSTS
SCALE: 3" = 1'-0"



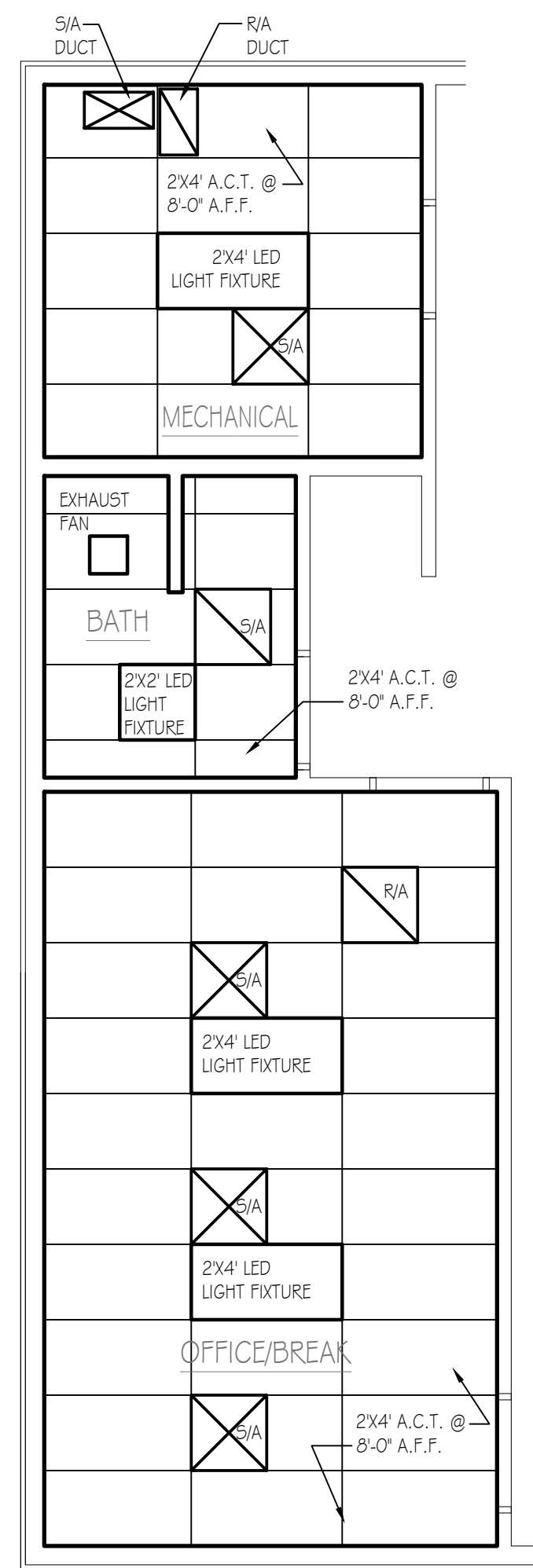
WALL SECTION DETAIL
SCALE: 1" = 1'-0"

TRUSS DRAWING IS DEFERRED.
NOTE: DESIGN LOADING (PSF)

TCLL	30
SNOW	29.75/42
TCDL	5.0
BCLL	0.0
BCDL	10.0
SPACING	4-0-0



PENNSYLVANIA GAME COMMISSION		
STATE GAME LANDS # 048	HARRISON TOWNSHIP	BEDFORD COUNTY
NEW 40' x 80' CREW HEADQUARTERS BUILDING		
WALL SECTION & DETAILS		
REVISIONS	PROJECT NO.	PGC-048-21-02
	DRAWN BY:	M. SPOTTS
	DATE:	3/11/2023
	SHEET NO.	A-2



REFLECTED CEILING PLAN
SCALE: 1/4" = 1'-0"

MARK	TYPE	MANUFACTURER	ROUGH OPENING	COLOR	QTY.	REMARKS
A	1	VINYL	2'-6" x 3'-0"	WHITE	7	WINDOW UNIT IN BATH TO HAVE BOTTOM SASH TEMPERED GLASS

WINDOW SCHEDULE NOTES:

- ALL WINDOWS TO BE COMPLETE WITH CLEAR LOW E GLASS W/ ARGON, INSECT SCREENS, GRILLES BETWEEN GLASS, INTEGRAL "J" CHANNEL TRIM AND TEMPERED GLASS AS REQUIRED BY CODE.
- EXTERIOR AND INTERIOR WINDOW COLOR TO BE WHITE.
- SEE SPECIFICATIONS FOR ADDITIONAL WINDOW INFORMATION.

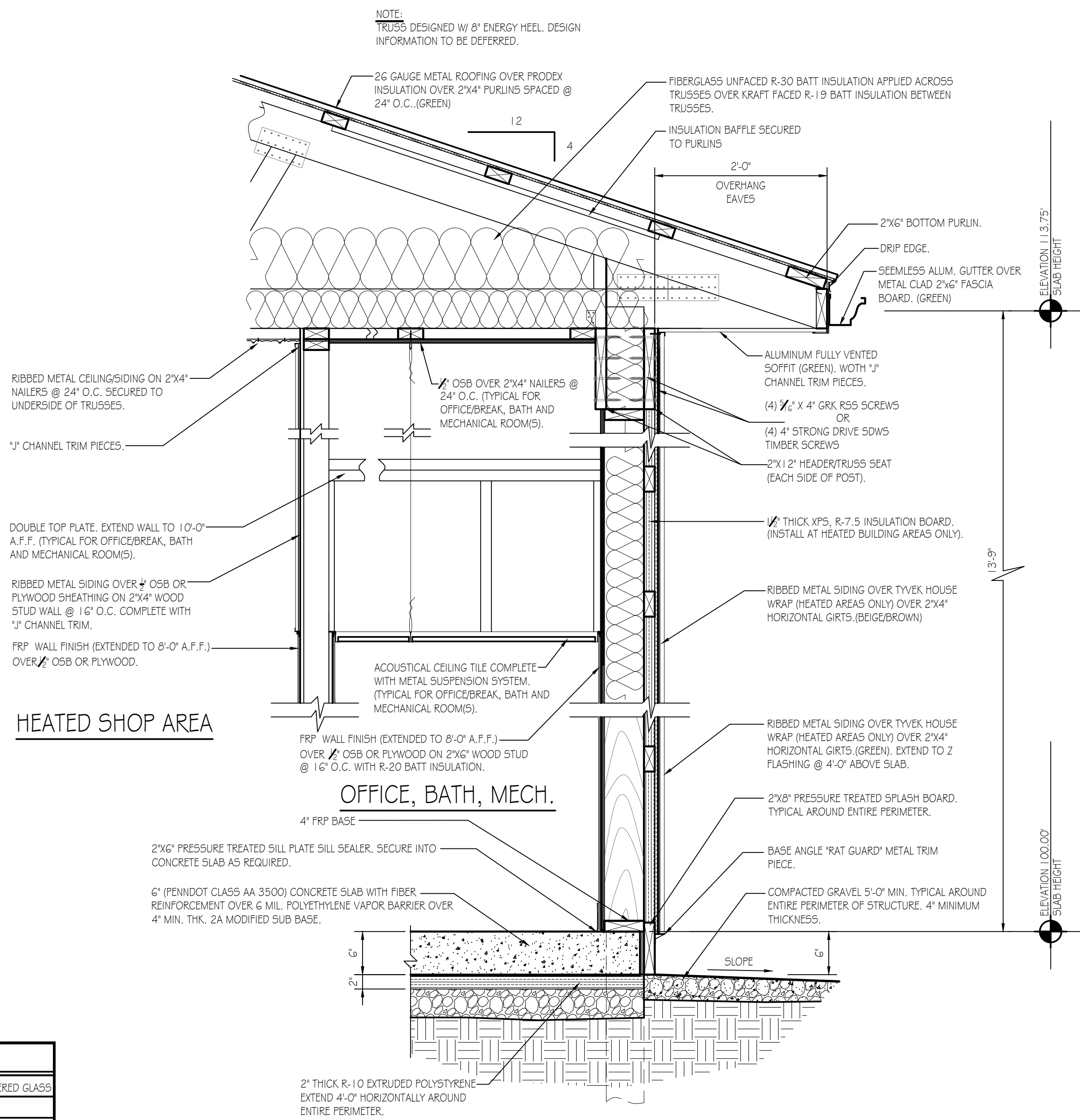
WINDOW SCHEDULE
N.T.S.

MARK	TYPE	WIDTH	HGT.	THK.	HAND	QTY.	REMARKS
A	3	3'-0"	7'-0"	1-3/4"	LHR	3	INSULATED CORE W/ GLASS, PANIC EXIT DEVICE, CLOSER
B	1	3'-0"	7'-0"	1-3/4"	RH	1	NON-INSULATED W/GLASS & PASSAGE SET
B ²	1	3'-0"	7'-0"	1-3/4"	RHR	1	NON-INSULATED W/GLASS & PASSAGE SET
C	2	3'-0"	7'-0"	1-3/4"	RH	1	NON-INSULATED W/ PRIVACY SET
D	1	3'-0"	7'-0"	1-3/4"	LHR	2	INSULATED CORE W/ GLASS, PANIC EXIT DEVICE, CLOSER
E	4	3'-0"	7'-0"	1-3/4"	LHR	1	NON-INSULATED W/GLASS, VENT & PASSAGE SET
F	O.H.	12'-0"	12'-0"			4	INSULATED SECTIONAL OVERHEAD DOOR
F ²	O.H.	14'-0"	12'-0"			1	INSULATED SECTIONAL OVERHEAD DOOR

DOOR SCHEDULE NOTES:

- ALL CORES TO BE BEST CORMAX, 7 PIN COMPATIBLE.
- SEE PROJECT SPECIFICATIONS FOR DOOR FRAMES & DOOR HARDWARE REQUIRED.

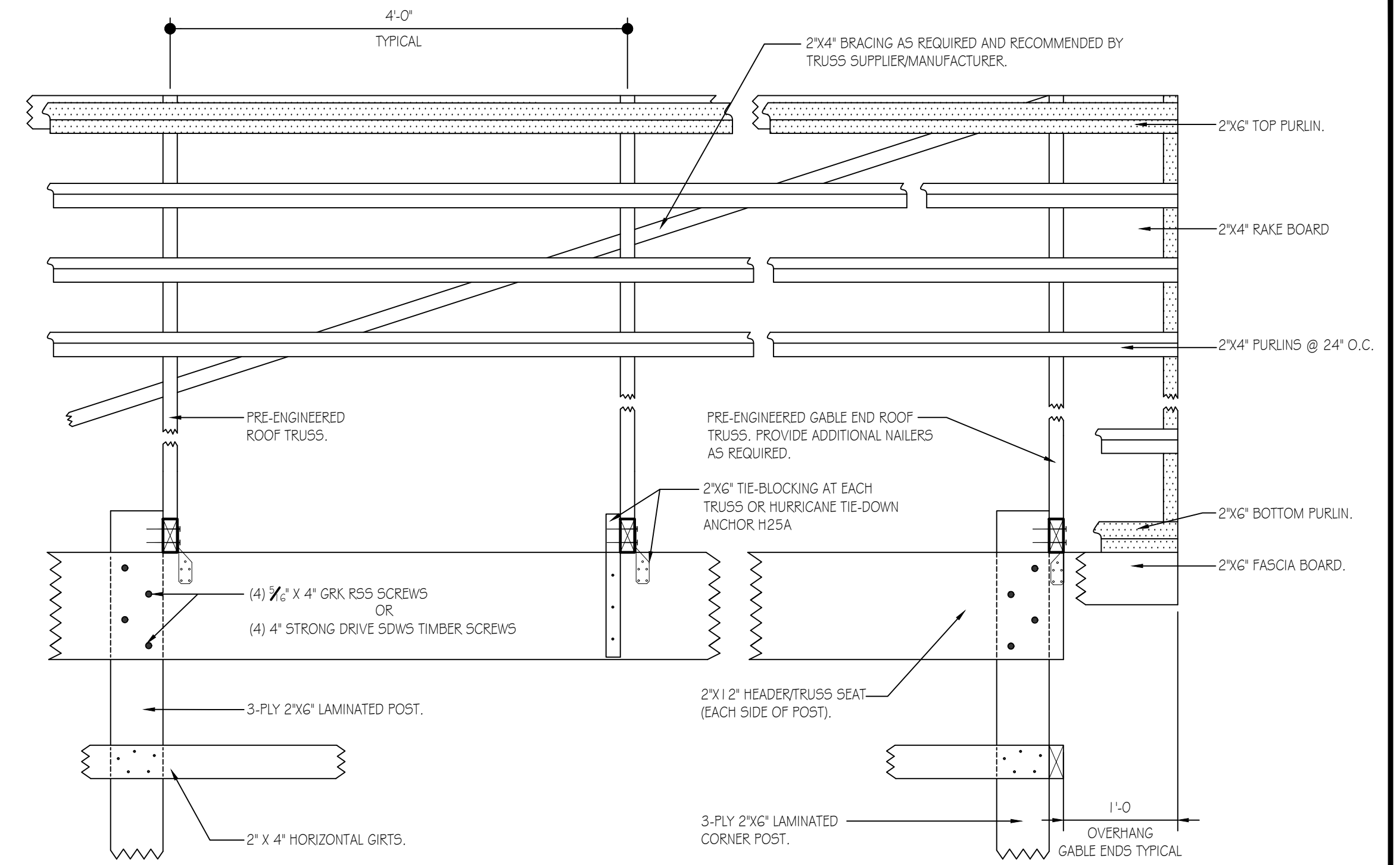
DOOR SCHEDULE
N.T.S.



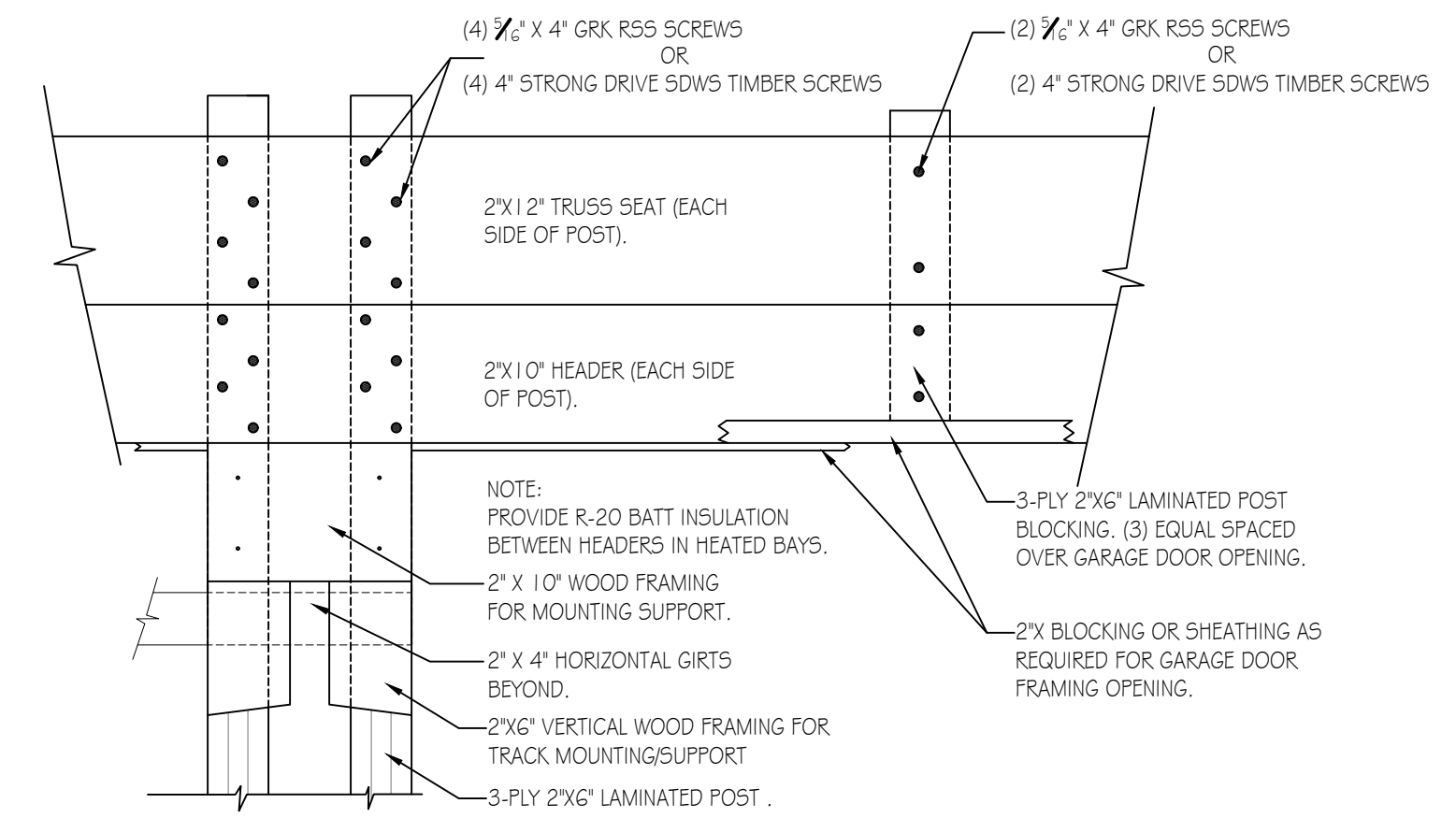
HEATED SHOP AREA

OFFICE, BATH, MECH.

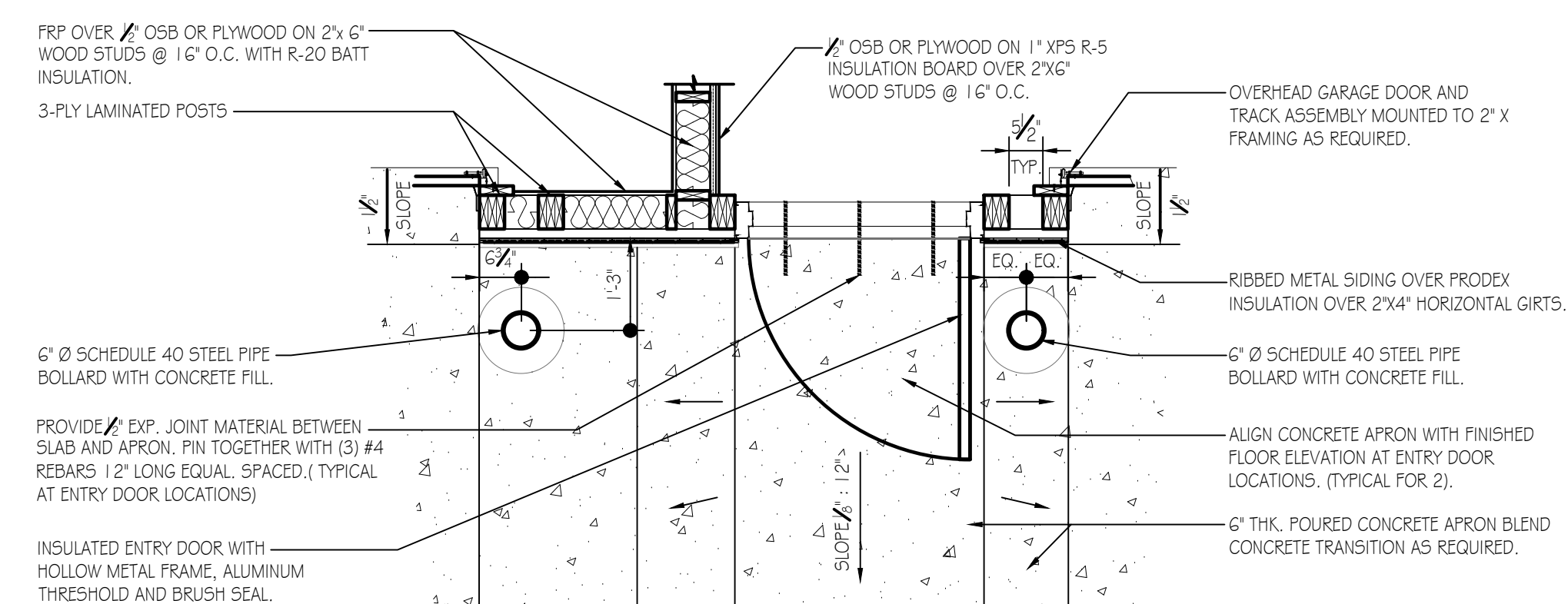
WALL SECTION DETAIL
SCALE: 1" = 1'-0" A-3



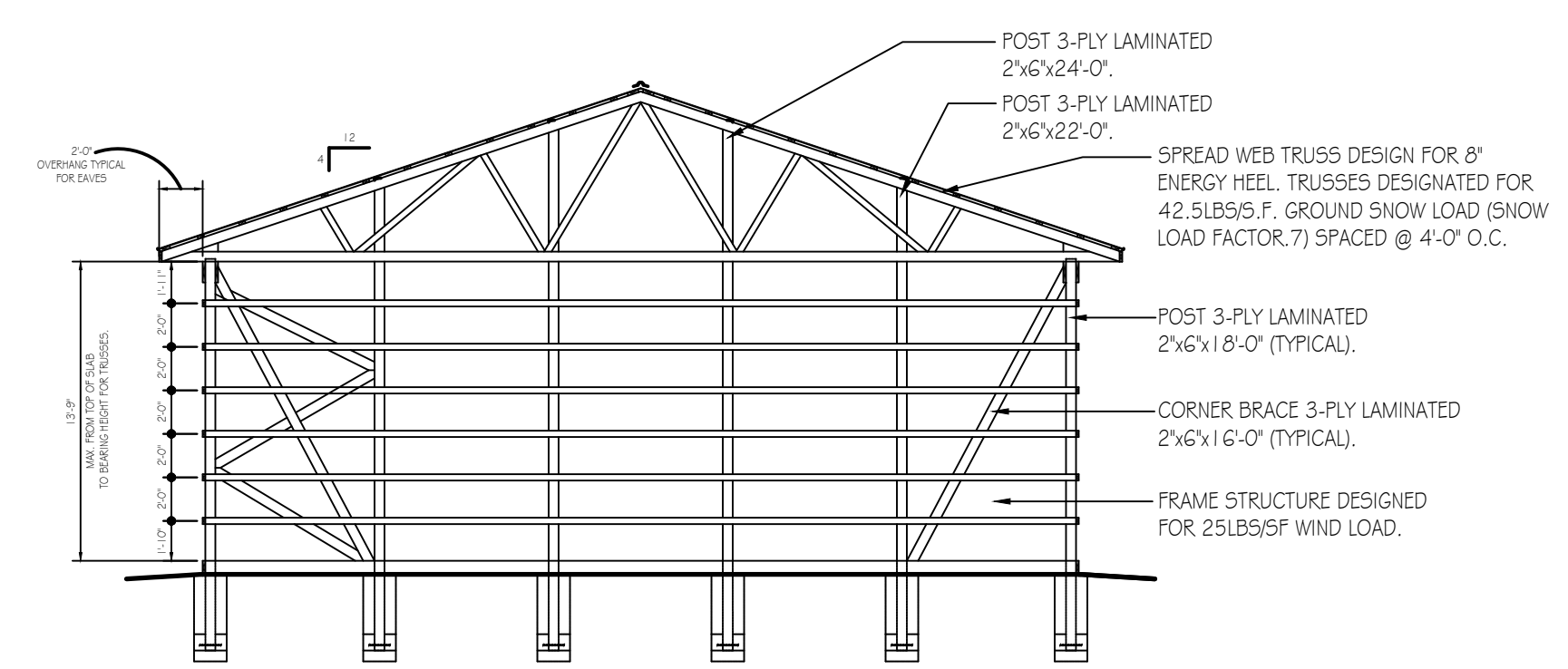
TYPICAL ROOF FRAMING/BRACING DETAIL
SCALE: 1" = 1'-0"



GARAGE DOOR FRAMING DETAIL
SCALE: 1" = 1'-0"



DETAIL AT ENTRY DOOR
SCALE: 1/2" = 1'-0"



TYPICAL SECTION
SCALE: 1/8" = 1'-0"

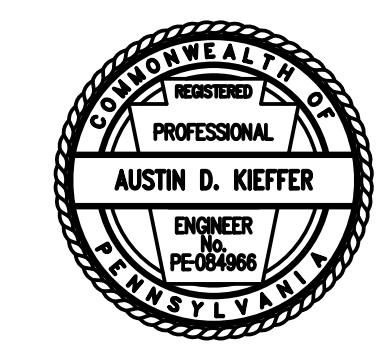
PENNSYLVANIA GAME COMMISSION

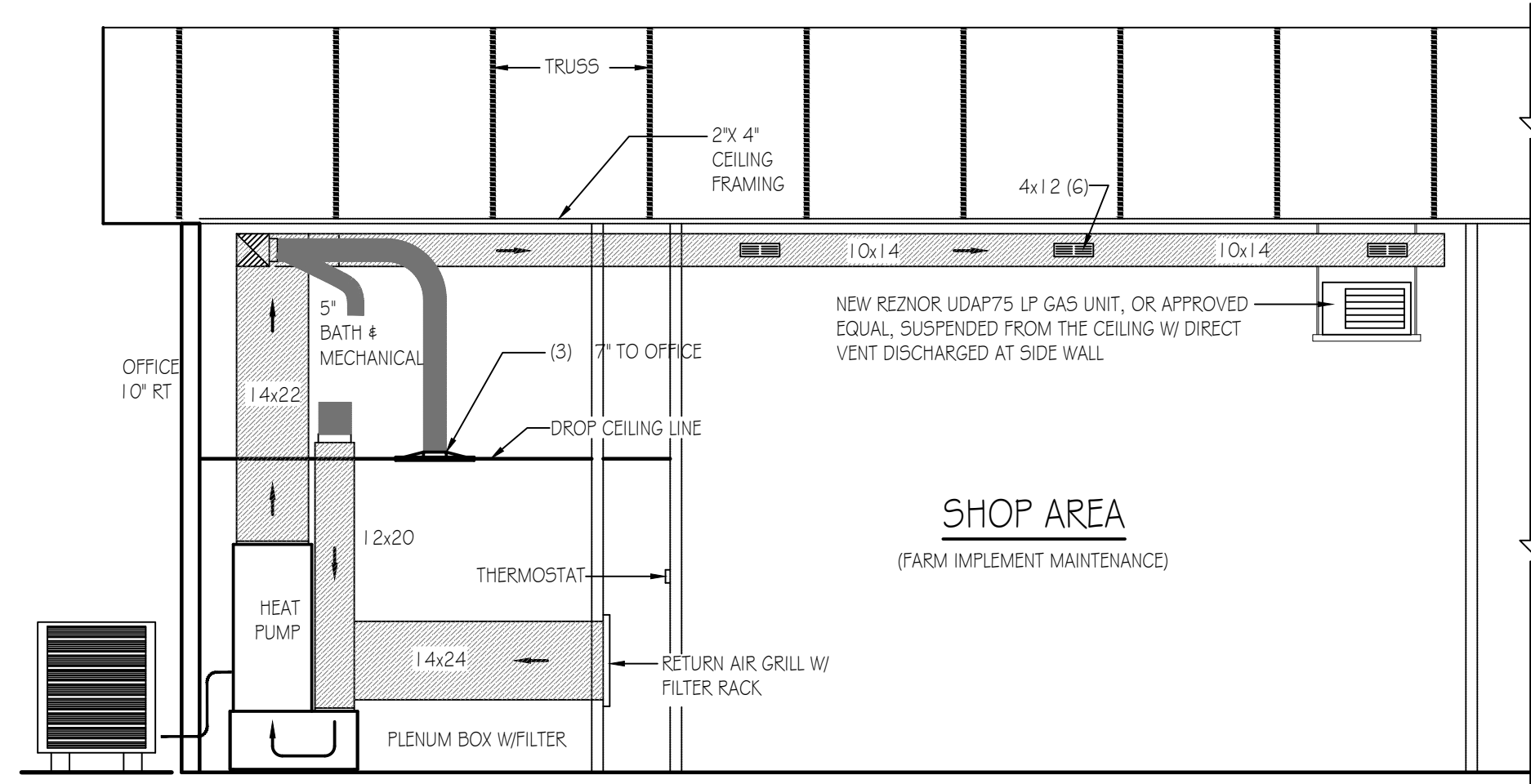
STATE GAME LANDS # 048 | HARRISON TOWNSHIP | BEDFORD COUNTY

NEW 40' x 80' CREW HEADQUARTERS BUILDING

SECTIONS, DETAILS, SCHEDULES & REFLECTED CEILING PLAN

REVISIONS	PROJECT NO.	PGC-048-21-02
	DRAWN BY:	M. SPOTTS
	DATE:	11/14/2022
	SHEET NO.	A-3



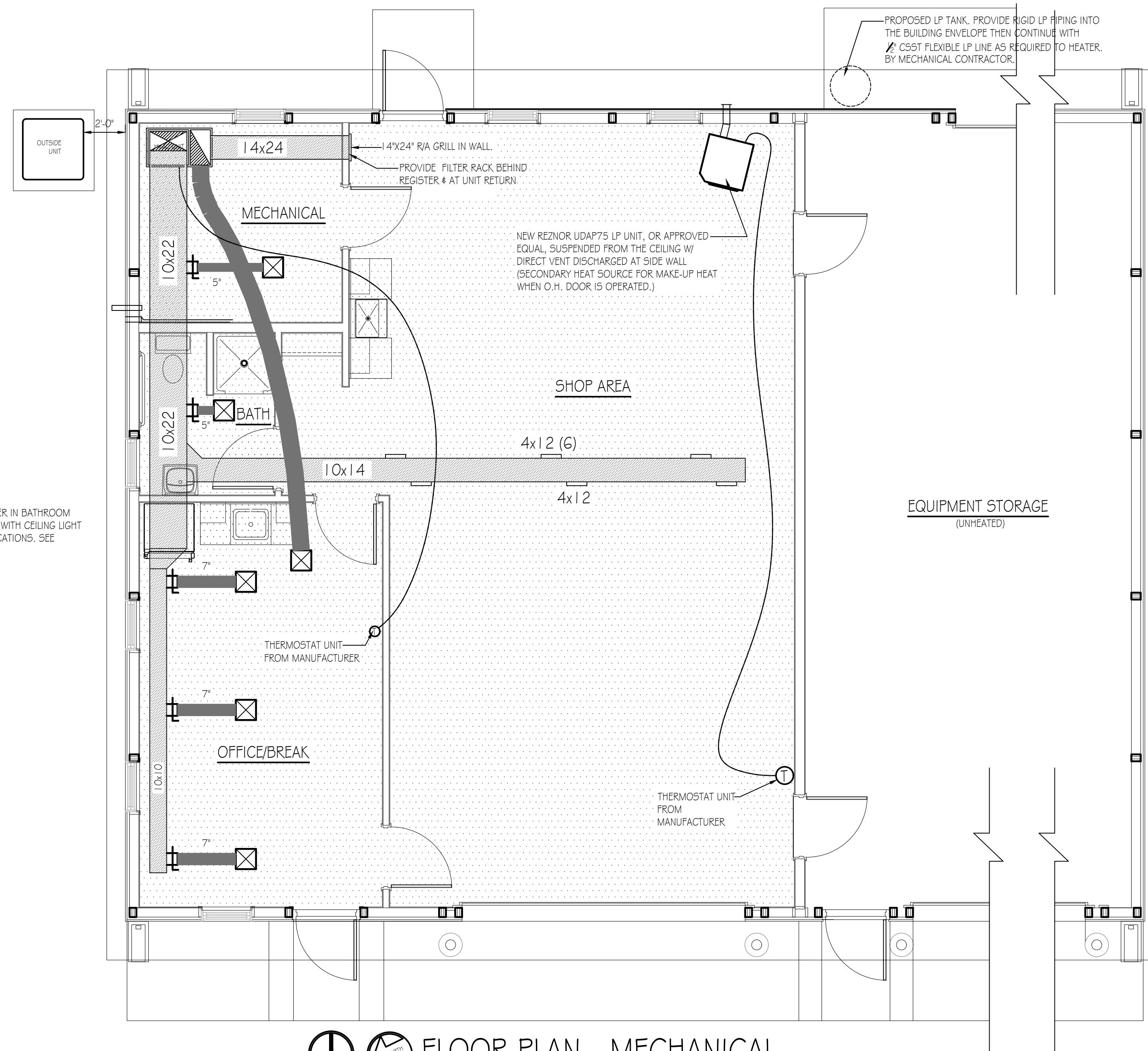


BUILDING SECTION - MECHANICAL
SCALE: 1/4" = 1'-0"

MECHANICAL CONSTRUCTION NOTES:

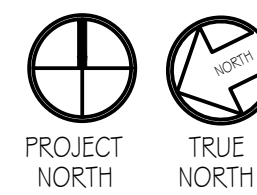
HVAC SYSTEM TO BE A BOSCH HEAT PUMP SYSTEM. LAYOUT OF DUCTS, DUCT SIZES AND DIFFUSERS ARE MEANT TO BE USED AS A GUIDELINE. ACTUAL RUNS, SIZES AND LOCATIONS TO BE DETERMINED BY MANUFACTURER'S MODEL. THE FOLLOWING STEPS SHOULD BE FOLLOWED IN THE DESIGN AND INSTALLATION OF THE HVAC SYSTEM TO ENSURE EFFICIENCY AND COMFORT.

1. DETERMINE ROOM-BY-ROOM AND AIR-FLOWS USING ACCA MANUAL J CALCULATION PROCEDURES. (OR SUBSTANTIALLY EQUIVALENT)
 2. SIZE DUCT SYSTEM ACCORDING TO ACCA MANUAL D CALCULATION PROCEDURES. (OR SUBSTANTIALLY EQUIVALENT)
 3. SIZE HVAC EQUIPMENT TO SENSIBLE LOAD USING ACCA MANUAL S CALCULATION PROCEDURES (OR SUBSTANTIALLY EQUIVALENT).
 4. INSTALL EQUIPMENT & DUCTS ACCORDING TO DESIGN SPECIFICATIONS USING INSTALLATION PROCEDURES FROM SMACNA / MANUFACTURERS' SPECS.
 5. INSTALL SO STATIC AIR PRESSURE DROP ACROSS THE AIR HANDLER IS WITHIN MANUFACTURER AND DESIGN SPECIFICATIONS.
 6. PROVIDE BALANCED AIR FLOWS BETWEEN SUPPLY AND RETURN SYSTEMS TO MAINTAIN NEUTRAL PRESSURE.
 7. EQUIPMENT AND ASSOCIATED ITEMS MUST BE APPROVED BY PGC HARRISBURG ENGINEERING DIVISION BEFORE START OF INSTALLATION.
- HEAT PUMP TO BE A 5 TON BOSCH BOVA - OGO-HDN1 - M18M OUTSIDE CONDENSER UNIT W/ BGH96M100CSB AIR HANDLER/FURNACE AND BMAC4860CNTF CASE COIL. UNITS TO ACHIEVE A MINIMUM 17 SEER AND 9.5 HSPF (OR SUBSTANTIALLY EQUIVALENT). SEE SPECIFICATIONS.

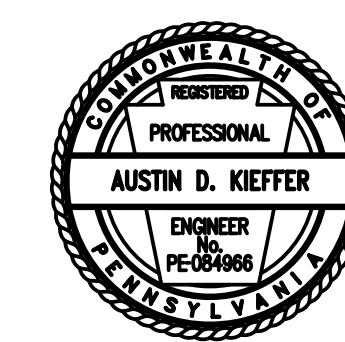


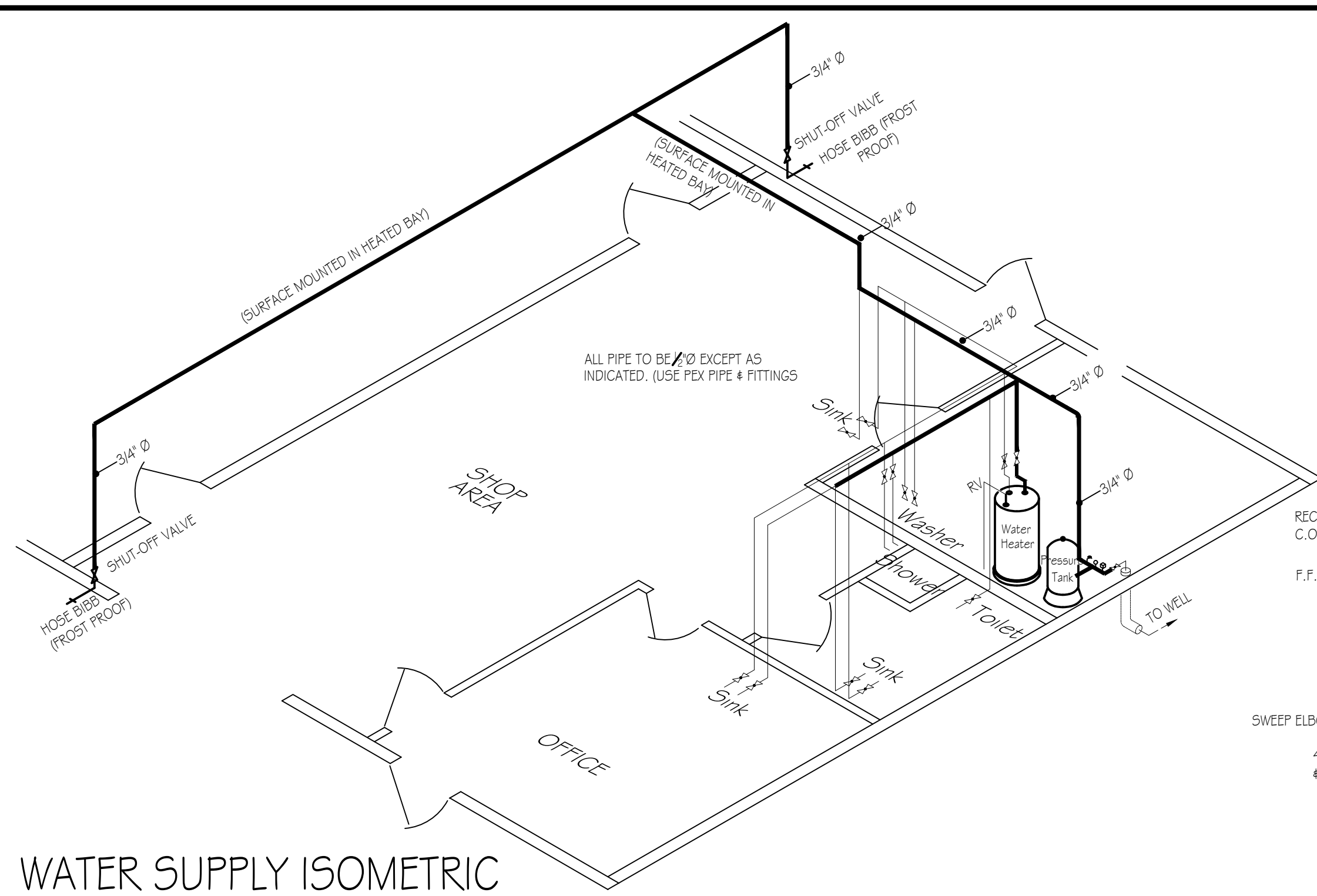
NOTE:
LOCATE AIR SUPPLY REGISTER IN BATHROOM BELOW DUCT. COORDINATE WITH CEILING LIGHT FIXTURE & EXHAUST FAN LOCATIONS. SEE REFLECTED CEILING LAYOUT.

FLOOR PLAN - MECHANICAL
SCALE: 1/4" = 1'-0"



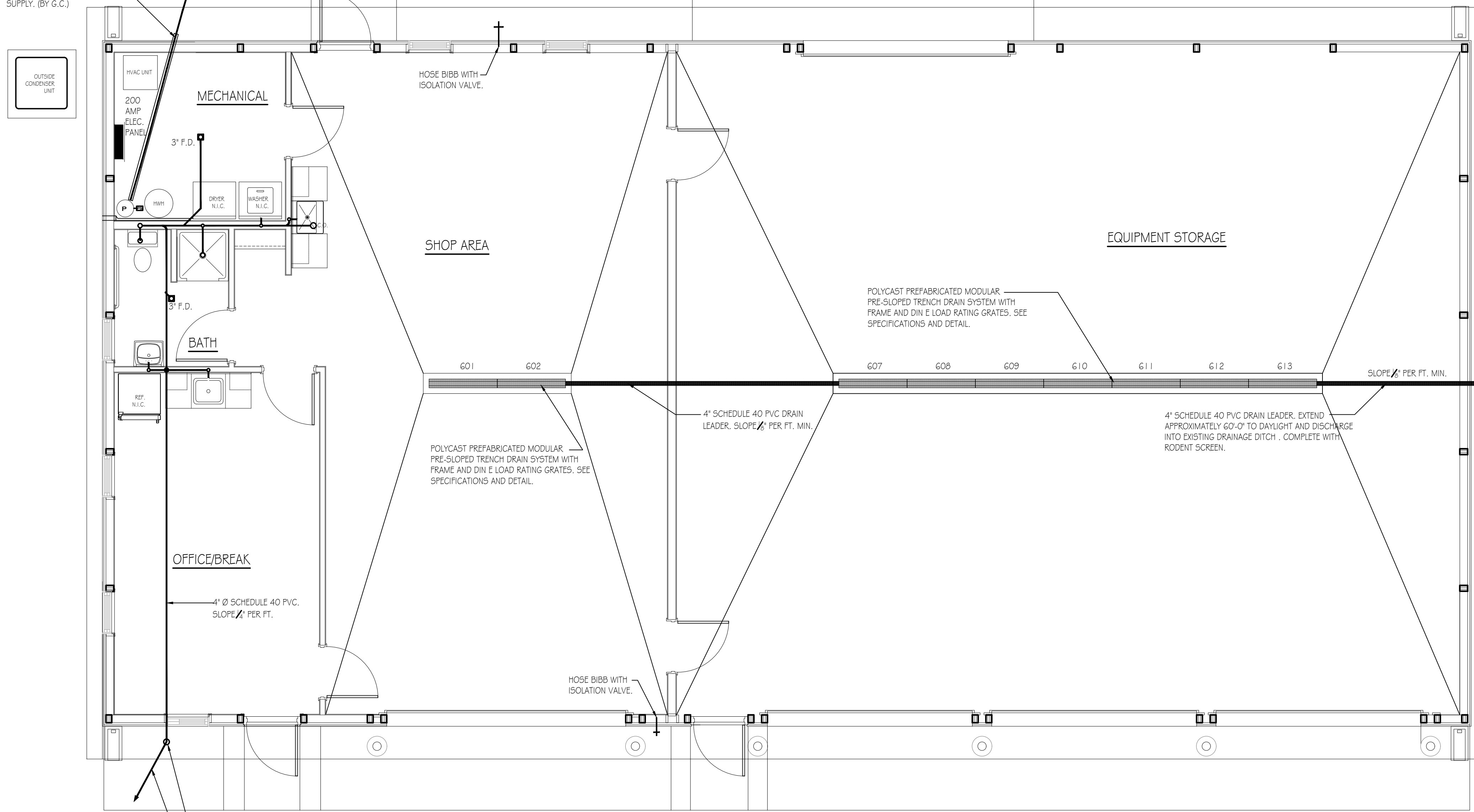
PENNSYLVANIA GAME COMMISSION		
STATE GAME LANDS # 048	HARRISON TOWNSHIP	BEDFORD COUNTY
NEW 40' x 80' CREW HEADQUARTERS BUILDING		
MECHANICAL FLOOR PLAN AND DETAILS		
REVISIONS	PROJECT NO.	PGC-048-21-02
	DRAWN BY:	M. SPOTTS
	DATE:	3/11/2023
	SHEET NO.	M-1



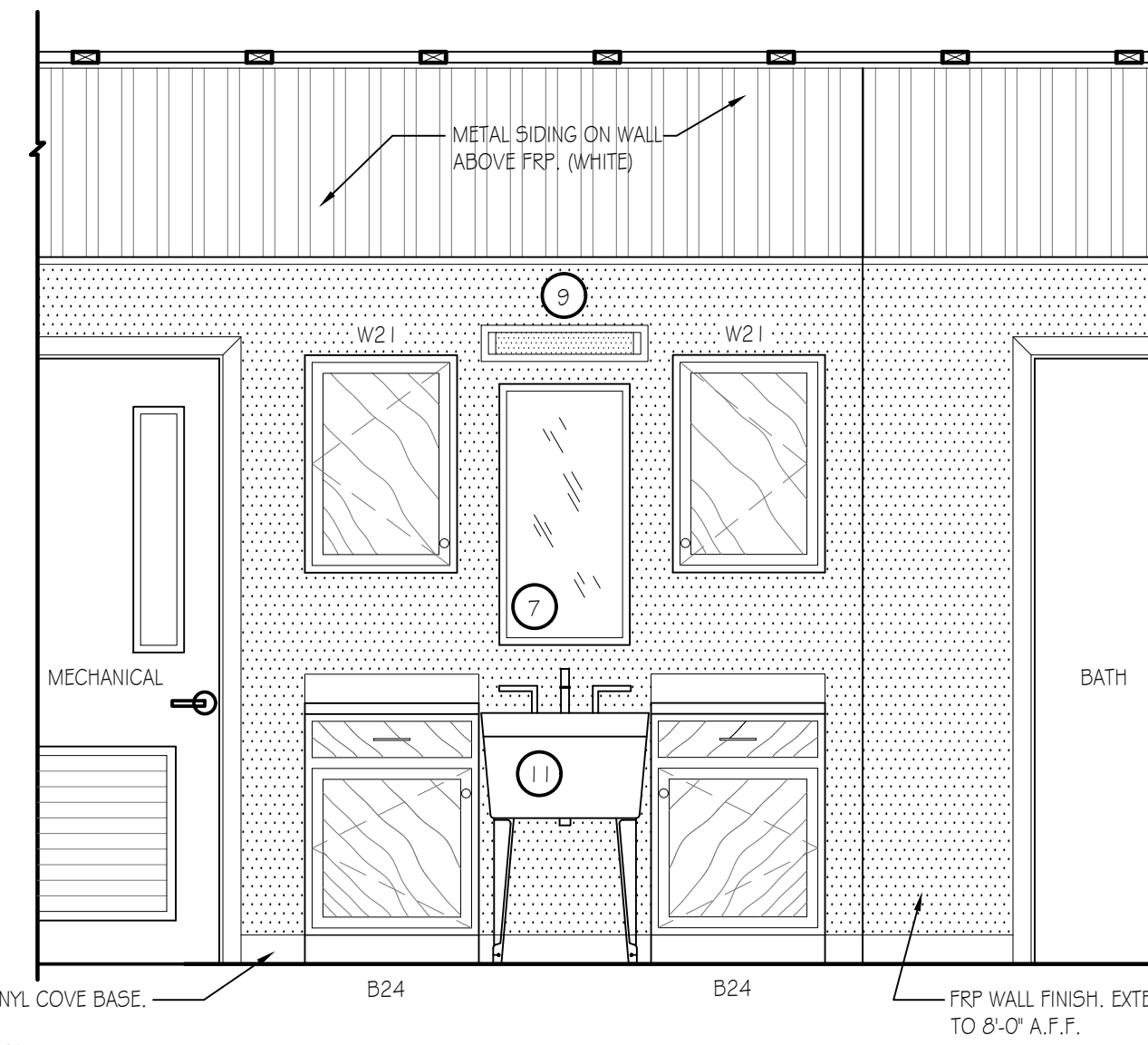


WATER SUPPLY ISOMETRIC
NO SCALE

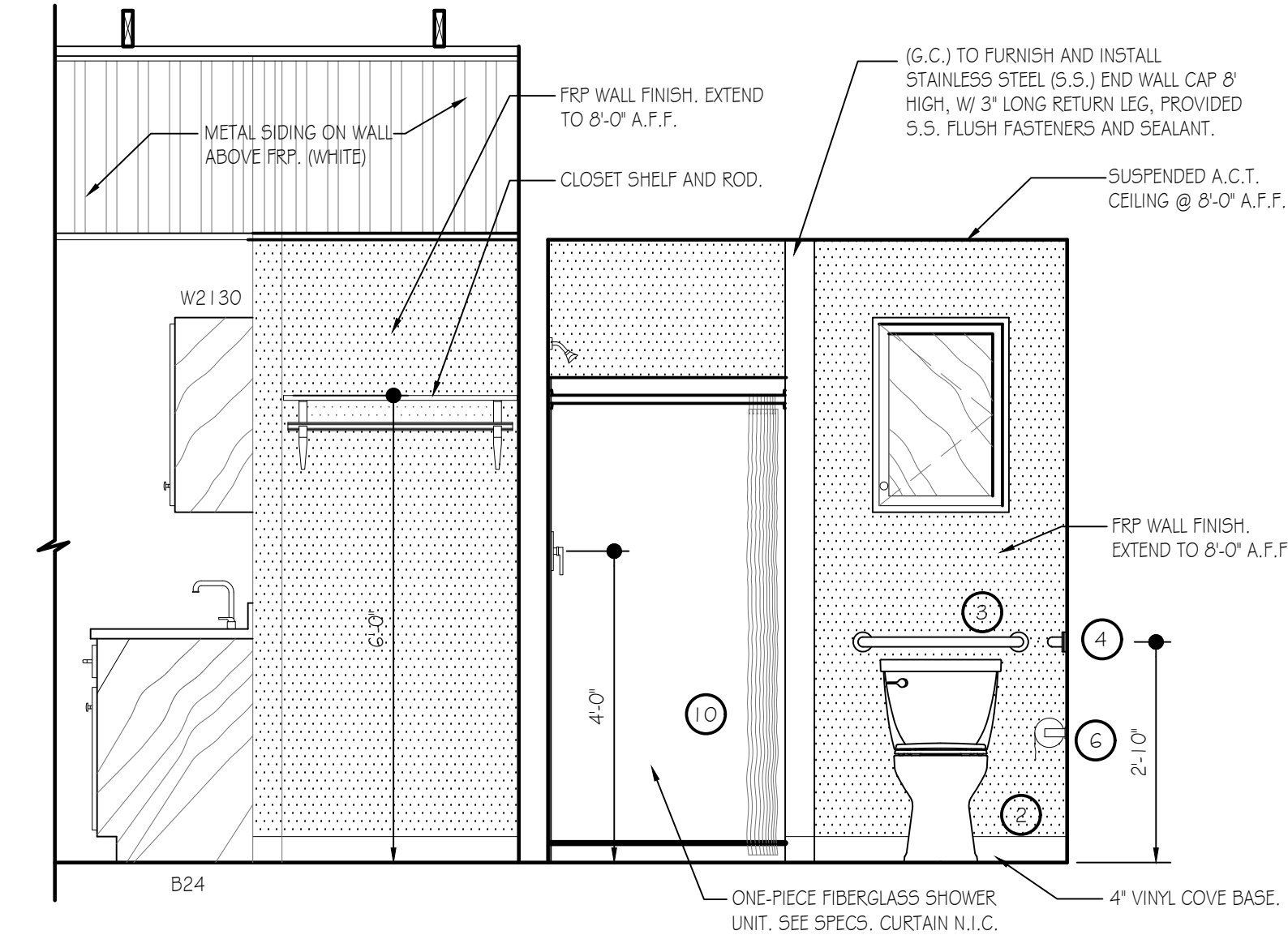
EXTEND TO NEW WELL LOCATION UNDER SEPERATE CONTRACT.
SLEEVE FOR NEW WATER SUPPLY. (BY G.C.)



MAIN SEWAGE SCHEMATIC
NO SCALE



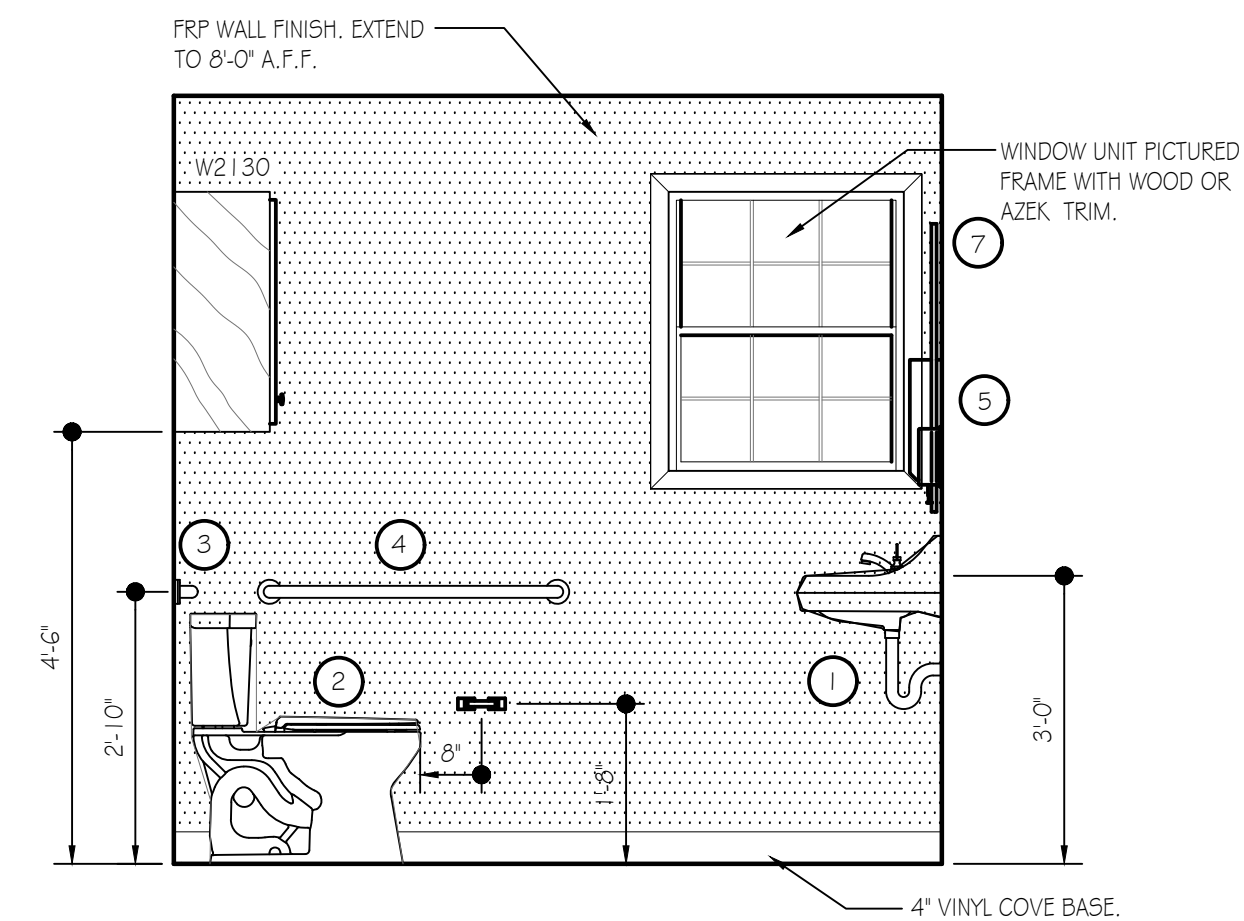
UTILITY AREA - ELEVATION "A"
SCALE: 1/2" = 1'-0"



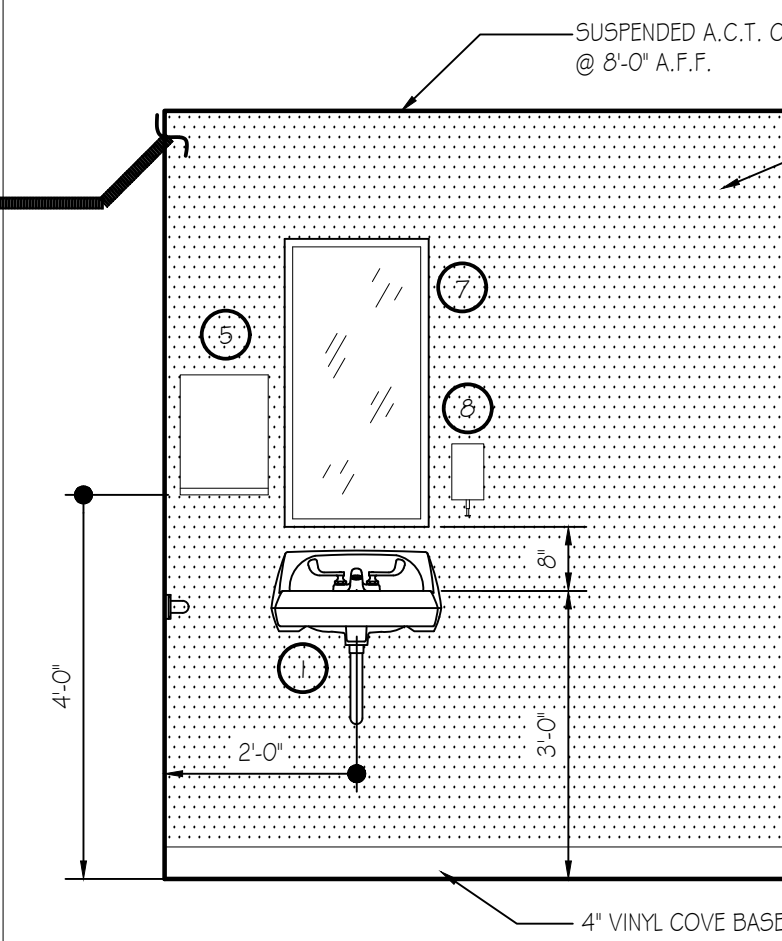
SHOP AREA/BATH - ELEVATION "B"
SCALE: 1/2" = 1'-0"

BRADLEY CORP. (FOR REF. ONLY)
FIXTURE/ACCESSORY LEGEND

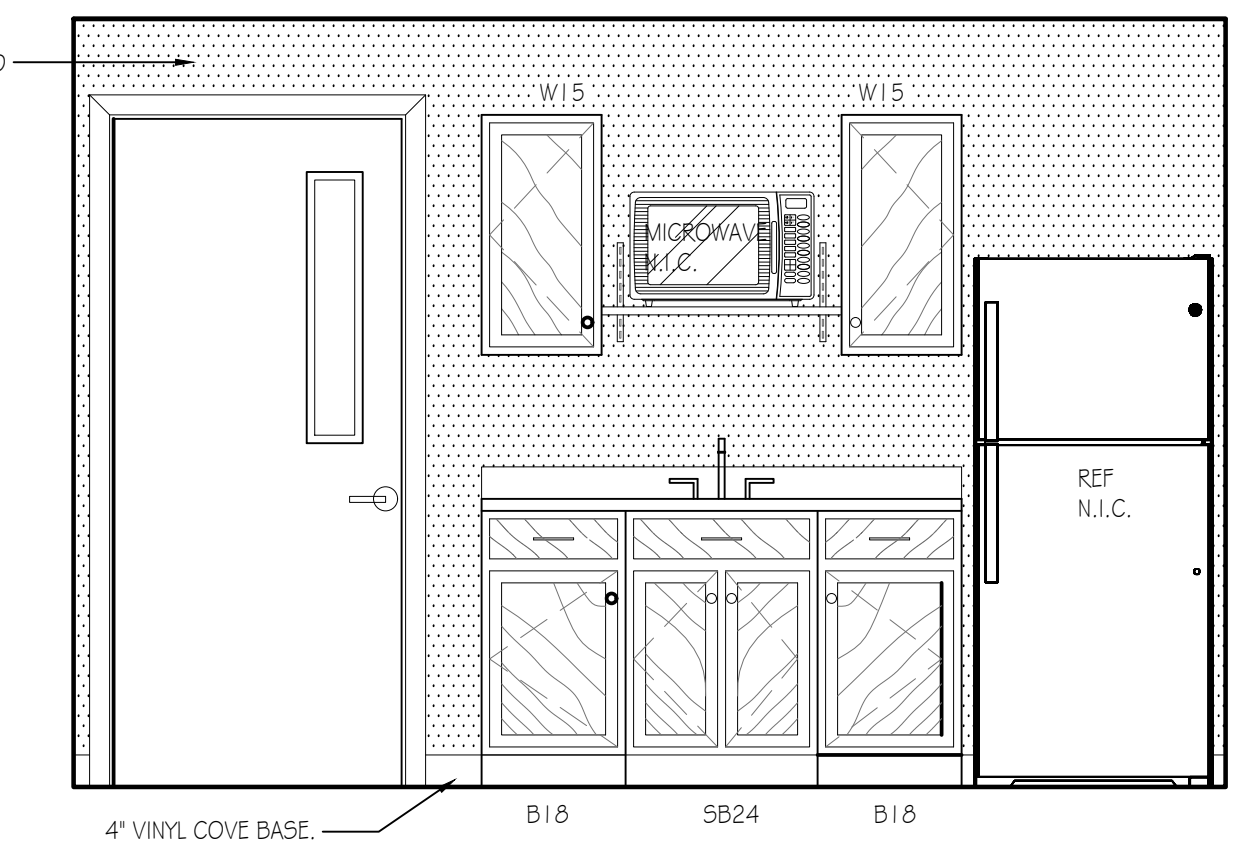
- ① SINK (W/FAUCET) SEE SPECS
- ② FLOOR MOUNTED WATER CLOSET SEE SPECS
- ③ GRAB BAR (24" LONG) MODEL 812
- ④ GRAB BAR (36" LONG) MODEL 812
- ⑤ TOWEL DISPENSER MODEL 250-15
- ⑥ TOILET TISSUE HOLDER MODEL 508
- ⑦ 18" x 36" MIRROR MODEL 780-1836
- ⑧ SOAP DISPENSER MODEL 655
- ⑨ LIGHT FIXTURE 2" INTEGRATED LED
- ⑩ ONE PIECE SHOWER UNIT GELCOATED FIBERGLASS
- ⑪ UTILITY SINK (W/FAUCET) SEE SPECS



BATH - ELEVATION "C"
SCALE: 1/2" = 1'-0"



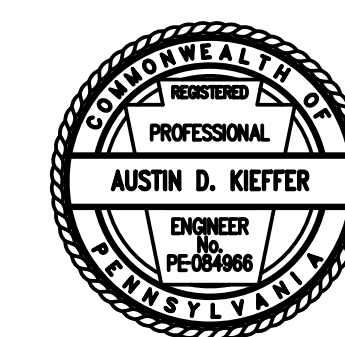
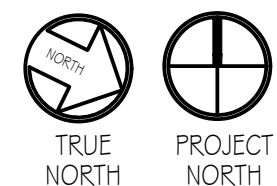
BATH - ELEVATION "D"
SCALE: 1/2" = 1'-0"



OFFICE/BREAK ROOM - ELEVATION "E"
SCALE: 1/2" = 1'-0"

4" SCHEDULE 40 PVC SLOPE 1/4" PER FT. EXTEND TO EXISTING SEPTIC TANK LOCATION APPROXIMATELY ±60'.
PROPOSED EXTERIOR CLEANOUT LOCATION AND TURN DOWN SANITARY LINE AS REQUIRED BY GRADE TO ACCOMMODATE A SLOPE MINIMUM 1/4" PER FT. TO CONNECT INTO EXISTING SEPTIC TANKLINE AT SAME INLET INVERT ELEVATION.

NEW CREW BUILDING - PLUMBING PLAN
SCALE: 1/4" = 1'-0"



PENNSYLVANIA GAME COMMISSION		
STATE GAME LANDS # 048	HARRISON TOWNSHIP	BEDFORD COUNTY
NEW 40' x 80' CREW HEADQUARTERS BUILDING		
PLUMBING FLOOR PLAN, ELEVATIONS & DETAILS		
REVISIONS	PROJECT NO.	PGC-048-21-02
	DRAWN BY:	M. SPOTTS
	DATE:	11/14/2022
	SHEET NO.	P-1

LOAD CENTER: 200A SERVICE PANEL SCHEDULE					
VOLTAGE: 240/120V					
SERVICE FEEDER SIZE: 2-#4/0 & 1-#2 AL					
Circuit No.	Circuit Breakers		200 AMP Main Service Breaker	Wiring No./Size	Conduit Size
	Poles	Amps			
1,3	2	50	220 VOLT OUTLET (WELDER)	3 - #6	1-1/4"
2,4			SPARE		
5,7	2	50	220 VOLT OUTLET (WELDER)	3 - #6	1-1/4"
6,8	2	30	220 VOLT OUTLET (AIR COMPRESSOR)	3 - #10	3/4"
9,11	2	30	MECHANICAL ROOM DRYER RECEPTACLE	3 - #10	3/4"
10,12	2	20	WELL PUMP	3 - #10	3/4"
13,15	2	40	HVAC OUTSIDE UNIT	3 - #8	1"
14,16	2	60	HVAC INSIDE AIR HANDLER UNIT	Verify w/ M.C.	Verify
17	1	20	WATER CONDITIONING EQUIPMENT	3 - #12	3/4"
18	1	20	WATER HEATER	3 - #12	3/4"
19	1	20	GAS HEATER	3 - #12	3/4"
20	1	20	SERVICE PANEL RECEPTACLE	3 - #12	3/4"
21	1	20	SHOP RECEPTACLES W/GFC PROTECTION	3 - #12	3/4"
22	1	20	SHOP RECEPTACLES W/GFC PROTECTION	3 - #12	3/4"
23	1	20	WORK SHOP GENERAL LIGHTING	3 - #12	3/4"
24			SPARE		
25	1	20	UTILITY GFI RECEPTACLES	3 - #12	3/4"
26	1	20	OFFICE, RESTROOM, & MECH. LIGHTING	3 - #12	3/4"
27	1	20	EQUIPMENT STORAGE LIGHTING	3 - #12	3/4"
28	1	20	EQUIPMENT STORAGE RECEPTACLES W/GFC PROTECTION	3 - #12	3/4"
29	1	20	EQUIPMENT STORAGE RECEPTACLES W/GFC PROTECTION	3 - #12	3/4"
30	1	20	REFRIGERATOR	3 - #12	3/4"
31	1	20	OFFICE RECEPTACLES	3 - #12	3/4"
32	1	20	BREAK, RESTROOM GFI RECEPTACLES	3 - #12	3/4"
33	1	20	MICROWAVE	3 - #12	3/4"
34	1	20	CLOTHES WASHER RECEPTACLE	3 - #12	3/4"
35	1	20	GARAGE DOOR OPENER RECEPTACLES	3 - #12	3/4"
36 - 42			SPARE SPACES		

PANEL SCHEDULE NOTES:

* Match receptacle to welder

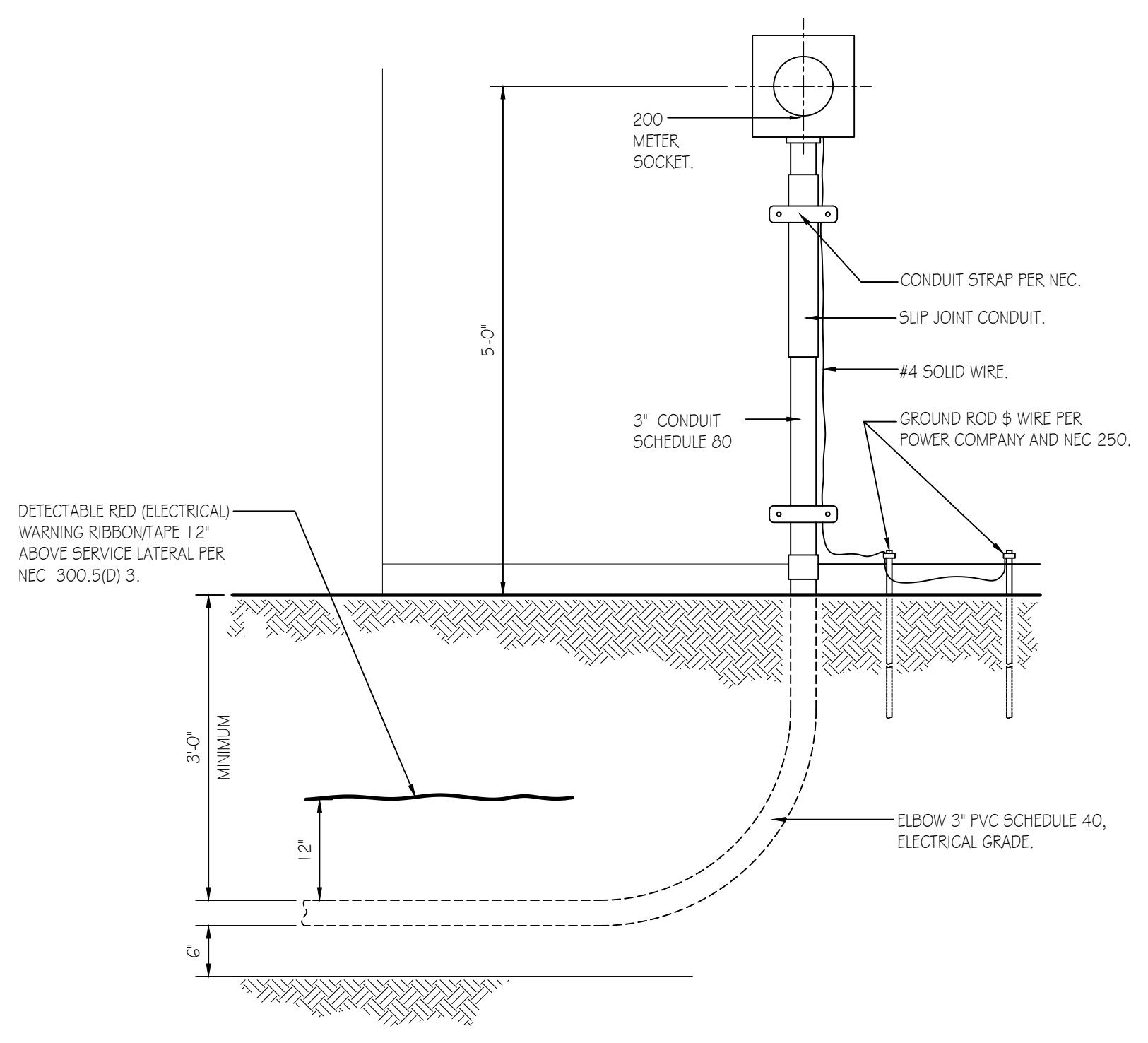
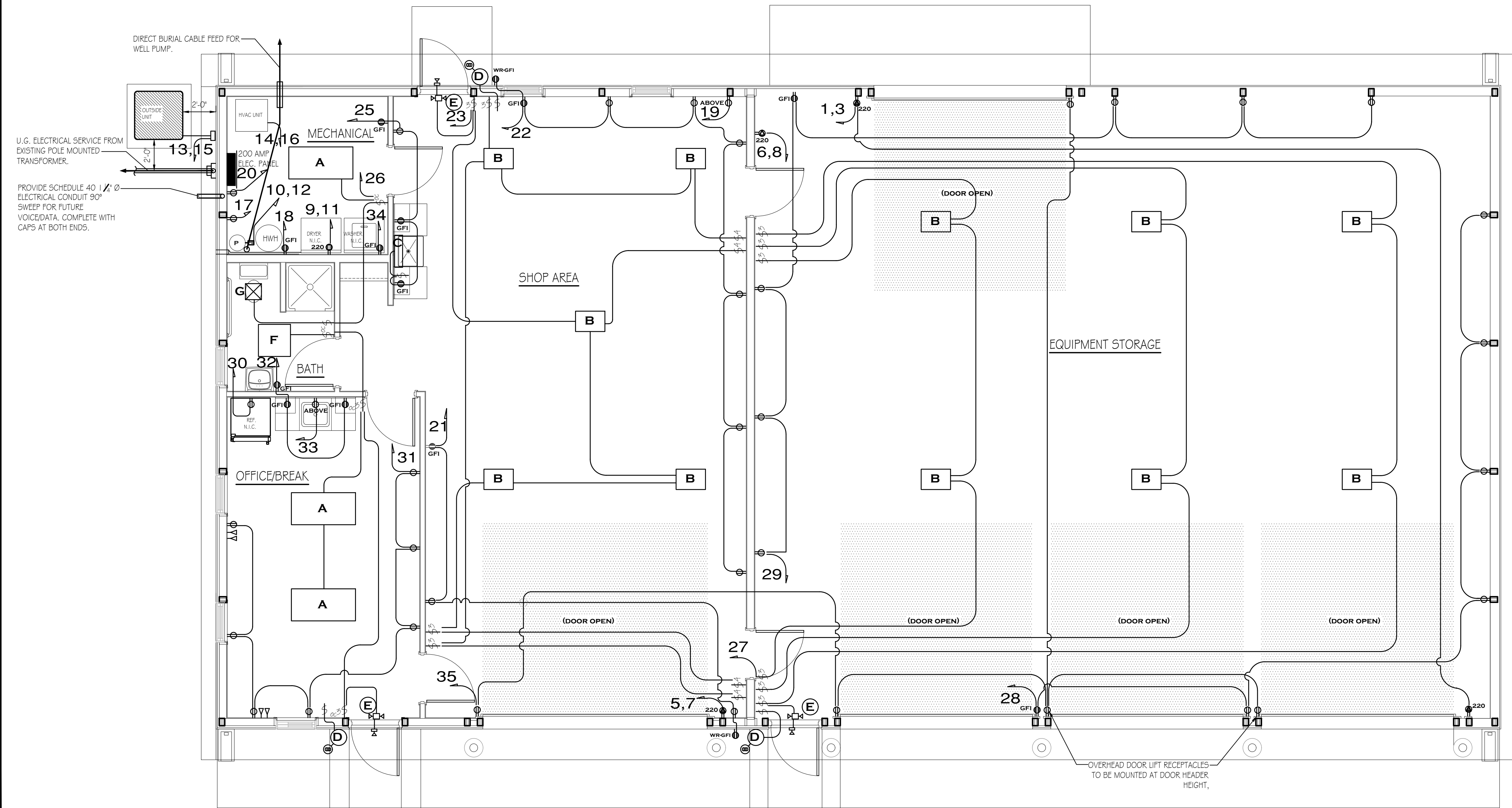
LIGHTING FIXTURE SCHEDULE			
MARK	QTY	FIXTURE TYPE	MODEL
A	3	2' X 4' LED PANEL	SIMKAR LDP2450L40U1
B	11	15.25' X 22' 4" LAMP LED HIGH BAY	LITHONIA IBH 15000LM 50080 MD OZ I O 40K 80 CRI
C	1	2' INTEGRATED LED WALL MOUNT VANITY LIGHT (18 WATT)	LITHONIA FMV1SL 3000K
D	3	SECURITY MOTION, WALL MOUNT/OUTSIDE UNIT	HEATH ZENITH SL-5630-B2
E	3	EXIT & EMERGENCY COMBO LIGHT WBATTERIES & REMOTE HEAD	LITHONIA ECRLEDHO MG WELA LED W6 M12
F	1	2' X 2' LED PANEL	SIMKAR LDP2240L40U1
G	1	110 CFM, CEILING MOUNT EXHAUST FAN	BROAN AER110K

RECEPTACLE & SWITCH MOUNTING HEIGHTS	
MICROWAVE	66"
WASHER	36"
DRYER	36"
OFFICE RECEPTACLES AND TELEPHONE	18"
ALL SWITCHES AND OTHER RECEPTACLES	48"

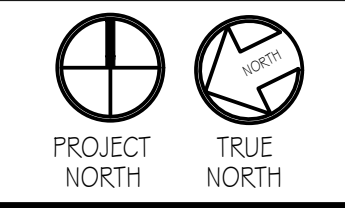
ELECTRICAL WIRING SYMBOLS	
	GFI-WATER RESISTANT RECEPTACLE
	GFI RECEPTACLE
	DUPLEX OUTLET, 5P/1T CIRCUIT
	DUPLEX OUTLET
	50 AMP, 220 VOLT OUTLET, WELDER (VERIFY TYPE & LOCATION WITH P&C)
	30 AMP, 220 VOLT OUTLET
	30 AMP, 220 VOLT OUTLET (DRYER)
	HOME RUN/CIRCUIT #
	TELECOMMUNICATIONS OUTLET
	JUNCTION BOX
	PHOTO CELL
	EXIT LIGHTING W/BATTERIES
	SWITCH
	3 SWITCH, 3 WAY
	4 SWITCH, 4 WAY
	OC OCCUPANCY SENSOR
	PRESSURE SWITCH
	WATER PUMP

GENERAL ELECTRICAL NOTES:

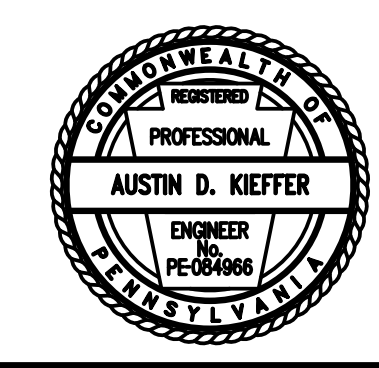
- FURNISH AND INSTALL SOLID COPPER CONDUCTORS AS SPECIFIED; NO ALUMINUM AND NO STRANDED. MC CABLE IS APPROVED FOR ALL HOME RUN CIRCUITS IF NEATLY INSTALLED.
- ALL CONDUCTORS FOR 120V CIRCUITS OVER 100' IN LENGTH SHALL BE MINIMUM #10AWG. ALL CONDUCTORS FOR 120V CIRCUITS OVER 150' IN LENGTH SHALL BE MINIMUM #8AWG. CONTRACTOR IS RESPONSIBLE FOR VERIFICATION OF FINAL CIRCUIT LENGTHS AND CORRESPONDING WIRE SIZE TO ENSURE VOLTAGE DROP IS MAINTAINED WITHIN NEC LIMITS.
- ALL WORK SHALL BE PERFORMED AS REQUIRED BY APPLICABLE SECTION OF THE NATIONAL ELECTRICAL CODE (NEC), LATEST EDITION, AND ALL GOVERNING UCC BUILDING CODES AND REGULATIONS.
- PROVIDE GROUNDING AND BONDING FOR ELECTRICAL SYSTEMS. ELECTRICAL COMPONENTS, DEVICES AND ACCESSORIES SHALL BE LISTED AND LABELED AS DEFINED IN NFPA 70 AND COMPLY WITH UL 467 FOR GROUNDING AND BONDING MATERIALS AND EQUIPMENT. INSTALL INSULATED EQUIPMENT GROUNDING CONDUCTORS ALL FEEDERS AND BRANCH CIRCUITS, LIGHTING CIRCUITS, RECEPTACLE CIRCUITS SINGLE PHASE MOTOR AND AFFLIANCE BRANCH CIRCUITS, ARMORED AND METAL-CLAD CABLE RUNS AND AS REQUIRED BY NFPA 70.
- PROVIDE ALL HANGERS AND SUPPORTS FOR ELECTRICAL SYSTEMS, INCLUDING STEEL SLOTTED SUPPORT SYSTEMS, CONDUIT AND CABLE SUPPORT DEVICES, SUPPORTS FOR CONDUCTORS IN VERTICAL CONDUIT. HANGERS AND SUPPORTS SHALL HAVE A FLAME RATING OF CLASS 1 AND BE SELF-EXTINGUISHING ACCORDING TO ASTM D 635.
- PROVIDE CAT6 WIRE LABELED AND RAN FROM EACH DATA BOX TO MECHANICAL ROOM. PROVIDE 10' ADDITIONAL COILED LENGTH IN MECHANICAL ROOM FOR EACH RUN.
- MOUNT COMBINATION EXIT/EMERGENCY LIGHTING UNITS TO THE LIGHTING BRANCH CIRCUIT IN THE ROOM IT IS SERVING ON THE LINE SIDE OF ANY SWITCHES.



UNDERGROUND SERVICE DETAIL
NO SCALE



NEW CREW BUILDING - ELECTRICAL PLAN
SCALE: 1/4" = 1'-0"



PENNSYLVANIA GAME COMMISSION		
STATE GAME LANDS # 048	HARRISON TOWNSHIP	BEDFORD COUNTY
NEW 40' x 80' CREW HEADQUARTERS BUILDING		
ELECTRICAL FLOOR PLAN, SCHEDULES & DETAILS		
REVISIONS	PROJECT NO.	PGC-048-21-02
	DRAWN BY:	M. SPOTTS
	DATE:	3/11/2023
	SHEET NO.	E-1